

RV VALVOLE A SFERA E MINI BALL
RV FULL BORE BALL VALVE AND MINI BALL

VALVOLA SICUREZZA TARATA

SET SAFETY VALVE

RV10



NEW

Codice/Code	Misura-Size	Tarata-Set	
RV100818	G1/8"	8,5 BAR	1
RV100814	G1/4"	8,5 BAR	1
RV101238	G3/8"	12 BAR	1
RV101212	G1/2"	12 BAR	1
RV101234	G3/4"	12 BAR	1
RV101201	G1"	12 BAR	1

DATI TECNICI RV10-11
 TECHNICAL FEATURES RV 10-11

SU RICHIESTA SONO FORNIBILI VALVOLE CON TATATURA DIVERSA
 ON DEMAND ARE SUITABLE SAFETY VALVES WITH DIFFERENT SETTINGS

Temperatura di utilizzo: NBR -10°C a +90°C. FKM -10°C +250°C
 Temperature range: NBR -10°C a +90°C FKM -10°C +250°C

Tenute: NBR 70, su richiesta FKM (viton)
 Sealing NBR 70 on demand FKM (viton)

VALVOLA ORIZZONTALE MASCHIO-MASCHIO

M.M. HORIZONTAL NON RETURN VALVE

RV14



NEW

Codice/Code	Misura-Size	
RV143838	3/8"M- 3/8"M	1
RV141238	1/2"M- 3/8"M	1
RV141212	1/2"M- 1/2"M	1
RV143412	3/4"M- 1/2"M	1

VALVOLA VERTICALE FEMMINA-MASCHIO

F.M. VERTICAL NON RETURN VALVE

RV16



NEW

Codice/Code	Misura-Size	
RV161238	1/2"F- 3/8"M	1
RV161212	1/2"F- 1/2"M	1
RV163412	3/4"F- 1/2"M	1
RV163434	3/4"F- 3/4"M	1

VALVOLA SICUREZZA LIBERA

FREE SAFETY VALVE

RV11



NEW

Codice/Code	Misura-Size	
RV110018	G1/8"	1
RV110014	G1/4"	1
RV110038	G3/8"	1
RV110012	G1/2"	1
RV110034	G3/4"	1
RV110001	G1"	1

VALVOLA VERTICALE MASCHIO-MASCHIO

M.M. VERTICAL NON RETURN VALVE

RV18



NEW

Codice/Code	Misura-Size	
RV181238	1/2"M- 3/8"M	1
RV183438	3/4"M- 3/8"M	1
RV180134	1"M- 3/4"M	1

VALVOLA ORIZZONTALE F.M.

F.M. HORIZONTAL NON RETURN VALVE

RV12



NEW

Codice/Code	Misura-Size	
RV120038	3/8"F- 3/8"M.	1
RV120012	1/2"F.- 1/2"M.	1

VALVOLA VERTICALE FEMMINA-FEMMINA

F.F. VERTICAL NON RETURN VALVE

RV20



NEW

Codice/Code	Misura-Size	
RV200101	1"F.- 1"F	1

RV28

RUBINETTO SPURGO

DRAINING VALVE

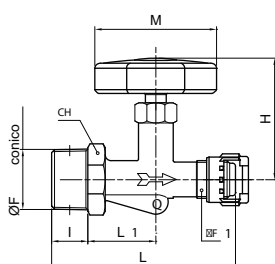


Codice/Code	F								
RV280018	G1/8								50
RV280014	G1/4								50
RV280038	G3/8								20
RV280012	G1/2								20

RV33

RUBINETTO LINEA CON VOLANTINO GHIERA

MALE LINE VALVE

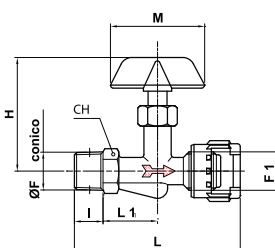


Codice/Code	F	F1	I	H	L	L1	CH	M	
RV330014	1/4	1/4	11	44,5	59,5	21	15	45	10
RV330038	3/8	1/4	11,5	44,5	59,5	20,5	15	45	10
RV330012	1/2	1/4	12,5	44,5	63,5	23,5	22	45	10

RV34

RUBINETTO LINEA LEVETTA GHIERA

MALE LINE VALVE



Codice/Code	F	F1	I	H	L	L1	CH	M	
RV340018	1/8	1/4	9	37,5	46,5	16	13	34	10
RV340014	1/4	1/4	11	44	59,5	21	15	43	10
RV340038	3/8	1/4	11,5	44	59,5	20,5	15	43	10
RV340012	1/2	1/4	12,5	44	63,5	23,5	22	43	10

DATI TECNICI RV40
TECHNICAL FEATURES RV40

Pressione di esercizio: 0,3-10 BAR
Working pressure: 0,3-10 BAR

Materiali: corpo ottone nichelato
Materials: body brass nickel plated

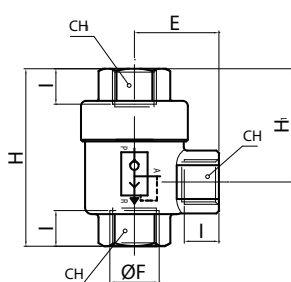
Temperatura di utilizzo: -18°C a +70°C
Temperature range: -18°C a +70°C

Tenute: Elastomero poliuretano
Sealing: Polyurethane elastomer

RV40

VALVOLA DI SCARICO RAPIDO

EXHAUST VALVE

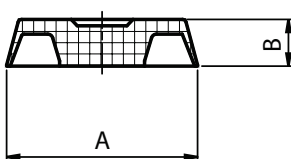


Codice/Code	F	I	H	H1	CH	CH1	E		
RV4000M5	M5	4	24,8	15,6	10	10	10,5		10
RV400018	1/8	8	42	28	14	14	19,5		20
RV400014	1/4	11	53	34,5	19	19	25		20
RV400038	3/8	12	58	36	21	21	26		10
RV400012	1/2	14	71	44	26	26	35		5
RV400034	3/4	18	86	52	32	32	38,5		5
RV400001	1"	19	94	56	38	38	42		5

RV40P

MEMBRANA PER VALVOLA DI SCARICO RAPIDO

MEMBRANE FOR QUICK EXHAUST VALVE



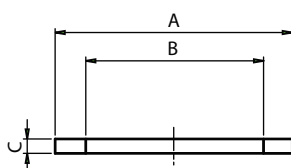
Codice/Code	ØD	ØP	L1	L2	H				
RV40PM5	M5	13,5	4,5						10
RV40P18	1/8	20,5	5						10
RV40P1438	1/4-3/8	25,5	5,8						10
RV40P12	1/2	35,5	8,2						10
RV40P3401	3/4-1"	40,5	9						10

NEW

RV40G

GUARNIZIONE IN NYLON PER VALVOLA DI SCARICO RAPIDO

NYLON SEAL FOR QUICK EXHAUST VALVE



Codice/Code	ØD	ØP	L1	L2	H				
RV40GM5	M5	17	12,4	0,8					10
RV40G18	1/8	23,8	20	1					10
RV40G1438	1/4-3/8	28,5	24	1					10
RV40G12	1/2	38,6	32	1,5					10
RV40G3401	3/4-1"	45	38	1,5					10

NEW

DATI TECNICI RV41-41A

TECHNICAL FEATURES RV41-41A

Pressione di esercizio: 10 BAR

Working pressure: 10 BAR

Temperatura di utilizzo: -5°C a +70°C

Temperature range: -5°C a +70°C

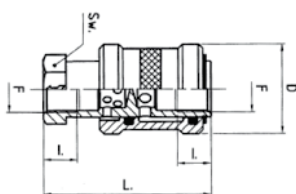
Materiali: corpo ottone nichelato o alluminio-corsoio alluminio anodizzato nero

Materials: body brass nickel plated or aluminium-slider aluminium black anodized

Tenute: O-ring NBR 70

Seals: O-ring NBR 70

RV41

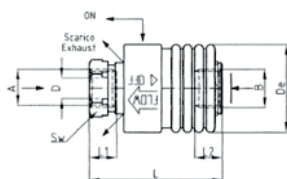


VALVOLA A CORSOIO

HAND SLIDE VALVE

Codice/Code	F	D	I	L	SW				
RV4100M5	M5	14	5	30,5	10				10
RV410018	G1/8"	25	9	48	14				10
RV410014	G1/4"	30	11,5	58	19				10
RV410038	G3/8"	35	12	70	22				10
RV410012	G1/2"	40	15	75	27				10
RV410034	G3/4"	50	16,5	83	32				10

RV41A



VALVOLA A CORSOIO IN ALLUMINIO

ALUMINIUM HAND SLIDE VALVE

Codice/Code	A-B	L1	L2	L	D	DE	SW		
RV41A0018	G1/8"	8	8	40	6	25	14		10
RV41A0014	G1/4"	9,5	9,5	46	8	30	17		10
RV41A0038	G3/8"	10,5	10,5	52	10	35	21		10
RV41A0012	G1/2"	12	12	62	12,5	40	26		10

NEW

DATI TECNICI RV36-37-38-39-42-43
TECHNICAL FEATURES RV36-37-38-39-42-43

Pressione di esercizio: 20 BAR
Working pressure: 20 BAR

Temperatura di utilizzo: -18°C a +80°C
Temperature range: -18°C a +80°C

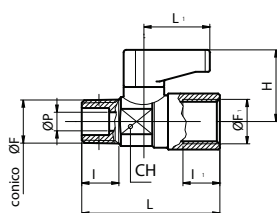
Materiali: corpo e sfera in ottone
Materials: body and ball brass

Guarnizioni sfera: PTFE O-ring NBR 70
Seals ball: PTFE O-ring NBR 70

Colore levetta: standard nero, su richiesta: rosso, blu, bianco, giallo, verde
Handle: standard black, on demand: red, blue, white, yellow, green

Trattamento superficiale: cromatura
Surface treatment: chromium plating

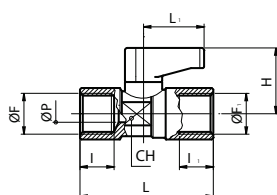
RV42



RUBINETTO MINI BALL MASCHIO/FEMMINA
MALE/FEMALE MINI BALL VALVE

Codice/Code	F	F1	P	I	I1	L	L1	H	CH	
RV421818	R1/8	G1/8	5,5	8	8	35,5	19	21,5	14	20
RV421418	R1/4	G1/8	5,5	11	8	38	19	21,5	14	20
RV421414	R1/4	G1/4	5,5	11	11	40,5	19	21,5	14	20
NEW RV423814	R3/8	G1/4	5,5	11,5	11	41,5	19	21,5	14	10
NEW RV423838	R3/8	G3/8	7	13	16	48	19	22,5	18	10
NEW RV421212	R1/2	G1/2	10	17	23	58	25	32	22	10

RV43



RUBINETTO MINI BALL FEMMINA/FEMMINA
FEMALE/FEMALE MINI BALL VALVE

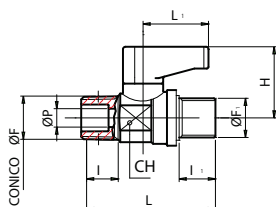
Codice/Code	F	F1	P	I	I1	L	L1	H	CH	
RV431818	G1/8	G1/8	5,5	8	8	36,5	19	21,5	14	20
RV431414	G1/4	G1/4	5,5	11	11	43	19	21,5	14	20
NEW RV433838	G3/8	G3/8	7	11,5	16	48	19	22,5	18	10
NEW RV431212	G1/2	G1/2	10	16	23	59	25	32	22	10

RV36



RUBINETTO MINI BALL MASCHIO-MASCHIO

MALE MALE MINI BALL VALVE



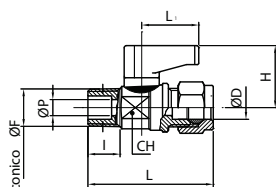
Codice/Code	F	F1	P	I	I1	L	L1	H	CH	
RV361818	R1/8	R1/8	5,5	8	7	33	19	21,5	14	20
RV361814	R1/8	R1/4	5,5	8	7,5	33,5	19	21,5	14	20
NEW RV361418	R1/4	R1/8	5,5	11	7	35,5	19	21,5	14	20
RV361414	R1/4	R1/4	5,5	11	7,5	36	19	21,5	14	20
NEW RV363814	R3/8	R1/4	5,5	11,5	7,5	37	19	21,5	14	10
NEW RV363838	R3/8	R3/8	7	13	10	45	19	22,5	18	10
NEW RV361212	R1/2	R1/2	10	17	10	48	25	32	22	10

RV37



RUBINETTO MINI BALL MASCHIO-OGIVA

MALE-COMPRESSION MINI BALL VALVE



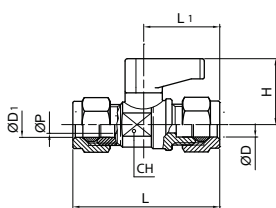
Codice/Code	F	P	I	I1	L	L1	H	CH	
RV371806	R1/8	6	5,5	8	40,5	19	21,5	14	20
RV371406	R1/4	6	5,5	11	43,5	19	21,5	14	20
RV371808	R1/8	8	5,5	8	41,5	19	21,5	14	20
RV371408	R1/4	8	5,5	11	44,5	19	21,5	14	20
NEW RV373808	R3/8	8	5,5	11,5	45	19	21,5	14	10

RV38



RUBINETTO MINI BALL OGIVA

COMPRESSION MINI BALL VALVE



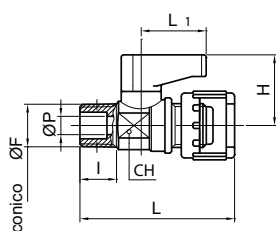
Codice/Code	F	P	I	L	L1	H	CH	
RV380606	6	6	5,5	47	19	21,5	14	20
RV380608	6	8	5,5	48	19	21,5	14	20
RV380808	8	8	5,5	49	19	21,5	14	20

RV39



RUBINETTO MINI BALL MASCHIO-BAIONETTA

MALE-NUT MILLED MINI BALL VALVE



Codice/Code	F	P	I	L	L1	H	CH	
RV391818	R1/8	5,5	8	38,5	19	21,5	14	20
RV391414	R1/4	5,5	11	41	19	21,5	14	20

DATI TECNICI RV44-45-49
TECHNICAL FEATURES RV44-45-49

Pressione di esercizio: 0-10 BAR
Working pressure: 0-10 BAR

Materiali: ottone nichelato
Materials: brass nickel plated

Temperatura di utilizzo: -10°C a +90°C
Temperature range: -10°C a +90°C

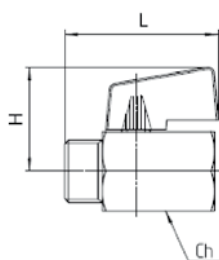
Tenute: Ptfе-Nbr 70
Sealing Ptfе-Nbr 70

Su richiesta Viton o Epdm
On demand Viton or Epdm

RV44

RUBINETTO A SFERA MASCHIO/FEMMINA

HEXAGONAL MINI BALL VALVE MALE/FEMALE

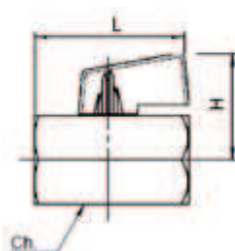


Codice/Code	F	DN	L	H	CH				
RV440018	G1/8"	8	39	27,5	20				20
RV440014	G1/4"	8	39	27,5	20				20
RV440038	G3/8"	8	40	27,6	20				10
RV440012	G1/2"	10	45	28,9	24				10
RV440034	G3/4"	13,5	51	31,8	30				10

RV45

RUBINETTO A SFERA FEMMINA/FEMMINA

HEXAGONAL MINI BALL VALVE FEMALE/FEMALE

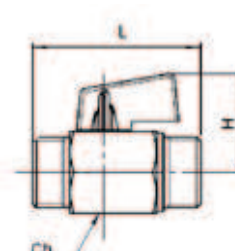


Codice/Code	F	DN	L	H	CH				
RV450018	G1/8"	8	39	27,5	20				20
RV450014	G1/4"	8	39	27,5	20				20
RV450038	G3/8"	8	42	27,5	20				10
RV450012	G1/2"	10	47	28,9	24				10
RV450034	G3/4"	13,5	54	31,8	30				10

RV49

RUBINETTO A SFERA MASCHIO/MASCHIO

HEXAGONAL MINI BALL VALVE MALE/MALE



Codice/Code	F	DN	L	H	CH				
RV490014	G1/4"	8	40,4	27,6	20				20
RV490038	G3/8"	8	42,4	27,6	20				10
RV490012	G1/2"	10	49,7	28,9	24				10

NEW

DATI TECNICI RV6V-47V-48V

TECHNICAL FEATURES RV6V-47V-48V

Pressione di esercizio: 0,5-10 BAR

Working pressure: 0,5-10 BAR

Temperatura di utilizzo: -20°C a +150°C

Temperature range: -20°C a +150°C

Materiali: corpo ottone-otturatore a sfera AISI 304

Materials: body brass nickel plated-shutter with ball AISI 304

Tenute: FKM (Viton)

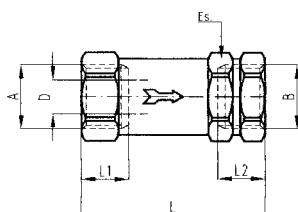
Seals: FKM (Viton)

RV46V



VALVOLA UNIDIREZIONALE FEMMINA/FEMMINA (VITON)

UNIDIRECTIONAL VALVE FEMALE/FEMALE (VITON)



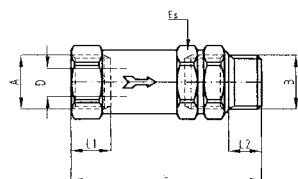
Codice/Code	A	B	D	L1	L2	L	ES		
RV4600M5V	M5	M5	2,8	6	6	24	10		10
RV460018V	G1/8"	G1/8"	5	8	8	31	13		20
RV460014V	G1/4"	G1/4"	7	9,5	9,5	37	16		20
RV460038V	G3/8"	G3/8"	8,5	10,5	10,5	42	20		10
RV460012V	G1/2"	G1/2"	10	12	12	50	25		10

RV47V



VALVOLA UNIDIREZIONALE MASCHIO/FEMMINA (VITON)

UNIDIRECTIONAL VALVE MALE/FEMALE (VITON)



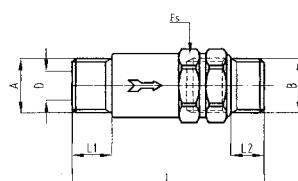
Codice/Code	A	B	D	L1	L2	L	ES		
RV470018V	G1/8"	G1/8"	5	7	8	30	13		20
RV470014V	G1/4"	G1/4"	7	8	9,5	35	16		20

RV48V



VALVOLA UNIDIREZIONALE MASCHIO-MASCHIO (VITON)

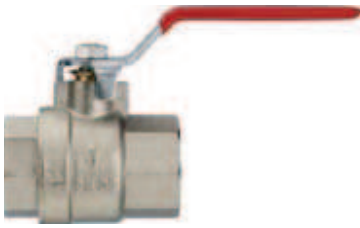
UNIDIRECTIONAL VALVE MALE-MALE (VITON)



Codice/Code	A	B	D	L1	L2	L	ES		
RV480018V	G1/8"	G1/8"	5	7	7	38	13		20
RV480014V	G1/4"	G1/4"	7	8	8	44	16		20

NEW

VALVOLE A SFERA IN OTTONE (serie media) / BRASS BALL VALVES (medium serie)



IMPIEGHI: sono adatte per impiantistica idraulica, installazioni idrotermosanitarie, aria compressa ed impianti di irrigazione.

Valvola a sfera a passaggio totale, attacchi filettati F/F - M/F - M/M. Standard leva rossa.

APPLICATIONS: are suitable for use in the hydraulic, sanitary, irrigation and compressed air industries.

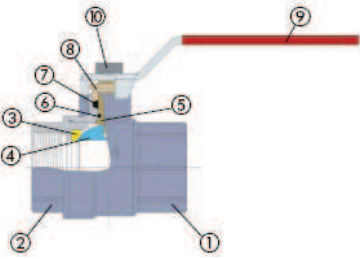
Full bore ball valve, threaded ends F/F - M/F - M/M. Standard red lever.

OMOLOGAZIONI INTERNAZIONALI INTERNATIONAL APPROVAL

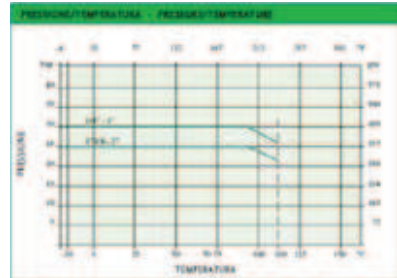
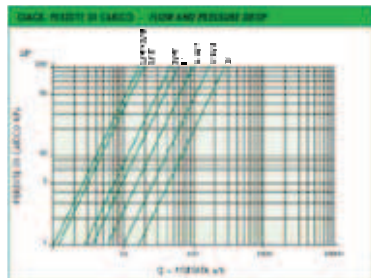


N. COMPONENTE / PART NAME	MATERIALE MATERIAL	TRATTAMENTO FINITURA FINISH
1 Corpo - Body	Ottone - Brass DN 42/50 - 100/125 - 150/200	Nichelato - Nickel plated
2 Manicotto - Body end	Ottone - Brass DN 42/50 - 100/125 - 150/200	Nichelato - Nickel plated
3 Segno - Seat	PTFE	
4 Sfera - Ball	Ottone - Brass DN 42/50 - 100/125 - 150/200	Cromato - Chrome plated
5 Asta - Stem	Ottone - Brass DN 42/50 - 100/125 - 150/200	
6 O-ring - O-ring	NBR	
7 Anello - Seal	PTFE	
8 Predisposizione - Packaging	Ottone - Brass DN 42/50 - 100/125 - 150/200	
9 Anello - Seal	Acilite - Steel	Black PTFE - Black coated
10 Dado - Nut	Acilite - Steel	Decapato - Decapated

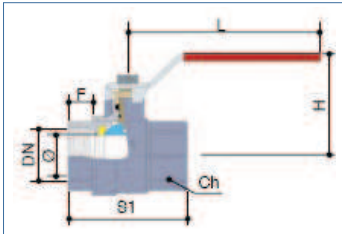
DATI TECNICI - TECHNICAL DATA		
Pressione di esercizio / Working pressure	1/4" - 1" / 1 1/4" - 2"	32 bar / 25 bar
Temperatura di esercizio / Working temperature	-10°C + 110°C	
Filettatura estremità / Threaded ends	UNI ISO 228/1	
Asta antiscoppio / Anti blow-out stem		



COEFFICIENTE KW - KW FACTOR	
1/4" - 3/8"	15
1/2" - 1"	20
1 1/4" - 2"	45
2 1/2" - 3"	60
4" - 6"	100
8" - 10"	170
12" - 15"	265



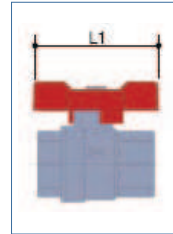
LEVA LEVER



RV50 FEMMINA-FEMMINA FEMALE-FEMALE

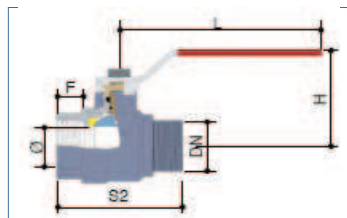
Codice	DN	O	F	S1	H	L	CH	
RV500014	G1/4	10	10	45	41	80	21	1
RV500038	G3/8	10	10	45	41	80	21	1
RV500012	G1/2	15	10	50	43	80	25	1
RV500034	G3/4	20	11	59	46	90	31	1
RV500001	G1	25	13	70	60	90	38	1
RV500114	G1 1/4	32	15,5	81	64	115	47	1
RV500112	G1 1/2	40	16,5	91	74	125	54	1
RV500002	G2	50	18	108	82	150	66	1
RV500212	G2 1/2	61	20	130	120	240	84	1
RV500003	G3	74	24	150	127	240	96	1
RV500004	G4	95	27	178	135	250	123	1

LEVA A FARFALLA BUTTERFLY LEVER



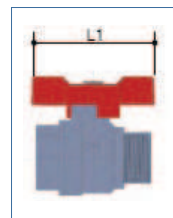
RV51 FEMMINA-FEMMINA FEMALE-FEMALE

Codice	DN	L1	
RV510014	G1/4	52	1
RV510038	G3/8	52	1
RV510012	G1/2	52	1
RV510034	G3/4	52	1
RV510001	G1	62	1



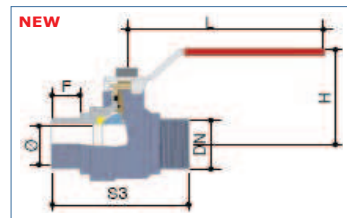
RV52 MASCHIO-FEMMINA MALE-FEMALE

Codice	DN	O	F	S2	H	L	
RV520014	G1/4	10	10	42	41	80	1
RV520038	G3/8	10	10	54	41	80	1
RV520012	G1/2	15	10	50	43	80	1
RV520034	G3/4	20	11	59	46	90	1
RV520001	G1	25	13	70	60	90	1
RV520114	G1 1/4	32	15,5	81	64	115	1
RV520112	G1 1/2	40	16,5	91	74	125	1
RV520002	G2	50	18	108	82	150	1



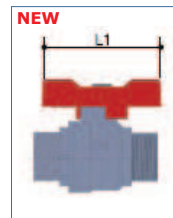
RV53 MASCHIO-FEMMINA MALE-FEMALE

Codice	DN	L1	
RV530014	G1/4	52	1
RV530038	G3/8	52	1
RV530012	G1/2	52	1
RV530034	G3/4	52	1
RV530001	G1	62	1



RV58 MASCHIO-MASCHIO MALE-MALE

Codice	DN	O	F	S3	H	L	
RV580014	G1/4	10	10	54	41	80	1
RV580038	G3/8	10	10	54	41	80	1
RV580012	G1/2	15	10	58	43	80	1
RV580034	G3/4	20	11	69	46	90	1
RV580001	G1	25	13	79	60	90	1
RV580114	G1 1/4	32	15,5	92	64	115	1
RV580112	G1 1/2	40	16,5	105	74	125	1
RV580002	G2	50	18	121	82	150	1



RV59 MASCHIO-MASCHIO MALE-MALE

Codice	DN	L1	
RV590014	G1/4	52	1
RV590038	G3/8	52	1
RV590012	G1/2	52	1
RV590034	G3/4	52	1
RV590001	G1	62	1

VALVOLE A SFERA IN OTTONE / BRASS BALL VALVES



IMPIEGHI: sono adatte per impiantistica idraulica, installazioni idrotermosanitarie, aria compressa.

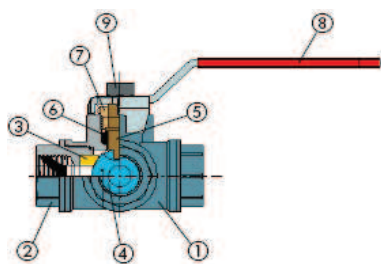
Valvola a sfera a tre vie a passaggio ridotto, sfera forata a **L** o a **T**. Attacchi filettati F/F/F. Standard leva rossa.

A richiesta leva blu.

APPLICATIONS: are suitable for use in the hydraulic, sanitary, and compressed air industries.

Three ways reduced bore ball valve, available as either **L** or **T** port threaded ends F/F/F. Standard red lever.

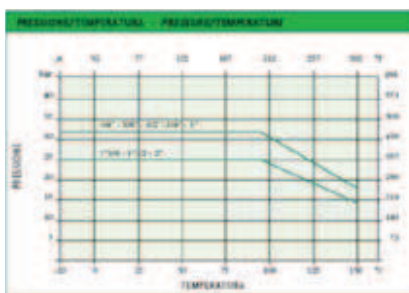
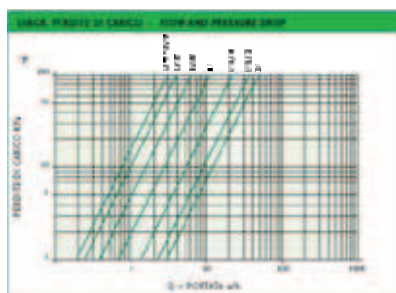
On demand blue lever.



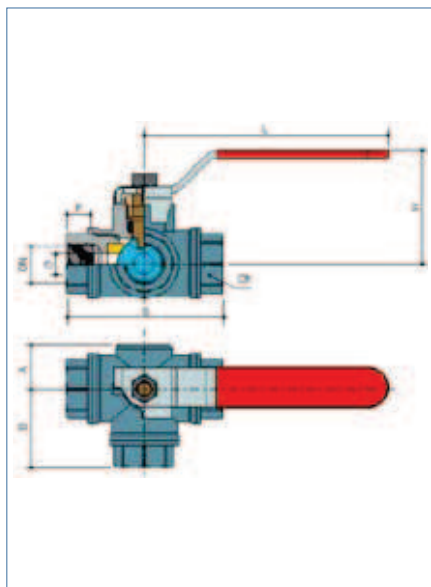
N. DESCRIZIONE / PART NAME	MATERIALE / MATERIAL	TATTAMENTO / TREATMENT
1 Corpo - Body	Ottone - Brass CW 417N - UNI EN 12067/90	Nickelato - Nickel plated
2 Manicotto - Body end	Ottone - Brass CW 417N - UNI EN 12067/90	Nickelato - Nickel plated
3 Seggio - Seat	PTFE	
4 Sfera - Ball	Ottone - Brass CW 417N - UNI EN 12067/90	Cromato - Chrome plated
5 Ala - Stem	Ottone - Brass CW 417N - UNI EN 12067/90	
6 Garnitura - O-ring	PTFE	
7 Pannello - Packing end	Ottone - Brass CW 417N - UNI EN 12067/90	
8 Anello - Seal	Acciaio - Steel	Black PTFE - Fluorinated
9 Coda - Nut	Acciaio - Steel	Zinco - Zinc plated

DATI TECNICI - TECHNICAL DATA	
Pressione di esercizio / Working pressure	1/4" - 1" 32 bar 1 1/4" - 2" 25 bar
Temperatura di esercizio / Working temperature	-20°C + 150°C
Filettatura esterne / Threaded ends	UNI ISO 228/1

COEFFICIENTE KW - KW FACTOR	
1/4" - 10	3
3/8" - 10	3
1/2" - 12	4
3/4" - 15	6
1" - 20	12
1 1/4" - 25	21
1 1/2" - 32	35
2" - 40	47



LEVA LEVER



RV54 FEMMINA-FEMMINA-FEMMINA (FORATA A "L")
FEMALE-FEMALE-FEMALE (EITHER "L")

Codice	DN	Ø	F	S	H	L	A	B	CH	
RV540014	G1/4	10	12	74	58	90	22	37	22	1
RV540038	G3/8	10	12	74	58	90	22	37	22	1
RV540012	G1/2	12	14	80	60	125	24	39	29	1
RV540034	G3/4	15	16	90	64	125	28	46	34	1
RV540001	G1	20	19	105	73	140	31	52	42	1
RV540114	G1 1/4	25	21	115	79	140	35	58	50	1
RV540112	G1 1/2	32	23	138	100	220	42	69	57	1
RV540002	G2	40	26	161	105	220	48	80	68	1

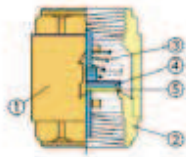


RV55 FEMMINA-FEMMINA-FEMMINA (FORATA A "T")
FEMALE-FEMALE-FEMALE (EITHER "T")

Codice	DN	Ø	F	S	H	L	A	B	CH	
RV550014	G1/4	10	12	74	58	90	22	37	22	1
RV550038	G3/8	10	12	74	58	90	22	37	22	1
RV550012	G1/2	12	14	80	60	125	24	39	29	1
RV550034	G3/4	15	16	90	64	125	28	46	34	1
RV550001	G1	20	19	105	73	140	31	52	42	1
RV550114	G1 1/4	25	21	115	79	140	35	58	50	1
RV550112	G1 1/2	32	23	138	100	220	42	69	57	1
RV550002	G2	40	26	161	105	220	48	80	68	1



VALVOLE DI RITEGNO / CHECK VALVES

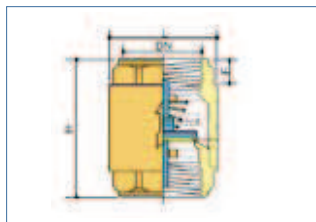


Valvola di ritegno tipo pesante.
 Attacchi filettati F/F.

Check valve heavy pattern.
 Threaded ends F/F.

N.	DESCRIZIONE PART NAME	MATERIALE MATERIAL	TREATMENT TRATTAMENTO
1	Corpo Body	CF8M - Incoloy 825/150	
2	Membrana Membrane	CF8M - Incoloy 825/150	Nickel - Nichel plating
3	Mini Spring	Acero AISI 304/316 Stainless steel AISI 304	
4	Olivetto Pin	CF8M - Incoloy 825/150 Steel - Acciaio AISI 408/208	Trattamento ZN 55/10 Anodization
5	Guarnizione Gasket	CF8M - Incoloy 825/150	Trattamento ZN 55/10 Light oil film

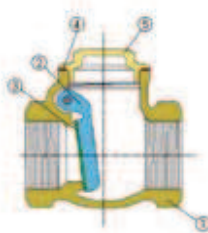
DATI TECNICI - TECHNICAL DATA		
Pressione di esercizio Working pressure	1/8" - 1" / 2 1/4" - 2" / 2 1/2" - 4"	25 bar / 36 bar / 30 bar
Temperatura di esercizio Working temperature	0 °C + 90 °C	
Filettatura estremità Threaded ends	UNI ISO 228/1	



RV56 VALVOLA DI RITEGNO CHECK VALVE

Codice	DN	F	L	H	
RV560012	G1/2	13	35	57	1
RV560034	G3/4	15	42	64	1
RV560001	G1	17	48	75	1
RV560114	G1 1/4	18	61	82	1
RV560112	G1 1/2	20	71	93	1
RV560002	G2	22	87	100	1
RV560212	G2 1/2	25	120	120	1
RV560003	G3	29	142	140	1
RV560004	G4	29	172	158	1

VALVOLE DI RITEGNO CLAPET / CLAPET CHECK VALVES



Valvola di ritegno a clapet con tenuta gomma.

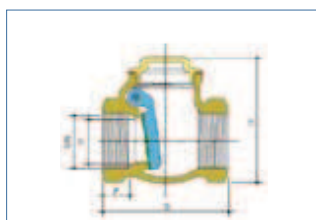
A richiesta con tenuta metallica.

Check valve with rubber seat.

On demand with metallic seat .

N.	DESCRIZIONE PART NAME	MATERIALE MATERIAL	TREATMENT TRATTAMENTO
1	Corpo Body	CF8M - Incoloy 825/150	
2	Olivetto Pin	CF8M - Incoloy 825/150	
3	Guarnizione Gasket	MB - MB	
4	Guarnizione Gasket	Filo inossidabile Not working size	
5	Spina Plug	CF8M - Incoloy 825/150	

DATI TECNICI - TECHNICAL DATA		
Pressione di esercizio Working pressure	16 bar	
Temperatura di esercizio Working temperature	0 °C + 90 °C	
Filettatura estremità Threaded ends	UNI ISO 228/1	



RV57 VALVOLA DI RITEGNO CLAPET CLAPET CHECK VALVE

Codice	DN	O	F	S	H	
RV570012	G1/2	15	8	47	51	1
RV570034	G3/4	20	8	53	58	1
RV570001	G1	25	10	63	68	1
RV570114	G1 1/4	33	10	70	78	1
RV570112	G1 1/2	37	10	88	98	1
RV570002	G2	47	11	97	109	1
RV570212	G2 1/2	55	16	120	130	1
RV570003	G3	70	16	135	145	1
RV570004	G4	90	20	162	180	1

VALVOLE A SFERA IN OTTONE (serie pesante) / BRASS BALL VALVES (heavy serie)



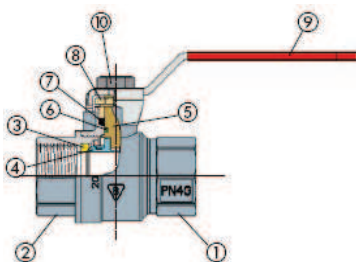
IMPIEGHI: sono adatte per impiantistica idraulica, installazioni idrotermosanitarie, acquedotti ed aria compressa.

Valvola a sfera a passaggio totale, attacchi filettati F/F - M/F - M/M. Standard leva rossa.

APPLICATIONS: are suitable for use in the hydraulic, sanitary, compressed air industries.

A richiesta leva blu. Full bore ball valve, threaded ends F/F - M/F - M/M. Standard red lever.

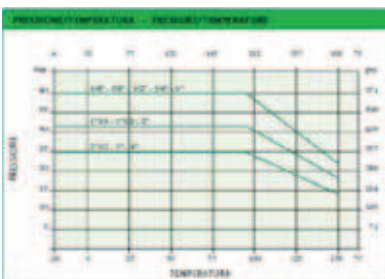
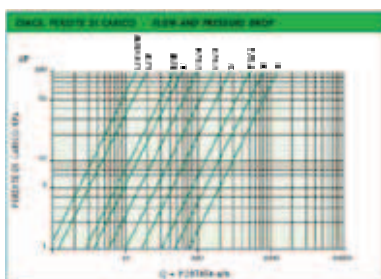
OMOLOGAZIONI INTERNAZIONALI INTERNATIONAL APPROVAL



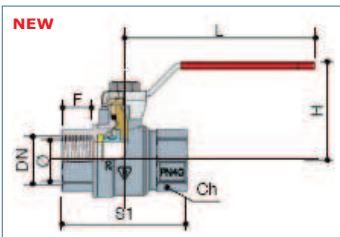
NO. COMPONENTE / PART NAME	MATERIALI / MATERIALS	TREATMENT / TRATTAMENTO
1 Copra - Stop	ottone - brass CF 127N - 184 EN 12547/16	Nickelato - Nickelplated
2 Manicella - Body end	ottone - brass CF 127N - 184 EN 12547/16	Nickelato - Nickelplated
3 Segno - Seal	PTFE	
4 Sfera - Ball	ottone - brass CF 127N - 184 EN 12547/16	Cromato - Chrome plated
5 Asta - Stem	ottone - brass CF 127N - 184 EN 12547/16	
6 O-Ring - O-Ring	PP - Polypropylene	
7 Giocattolo - Stem nut	PTFE	
8 Forcella - Pedigree	ottone - brass CF 127N - 184 EN 12547/16	
9 Maniglia - Handle	acciaio - steel	Black Pat. - Polychromed
10 Coda - Tail	acciaio - steel	Zinco - Zinc plated

DATI TECNICI - TECHNICAL DATA		
Pressione di esercizio / Working pressure	1/4" - 1" / 1 1/4" - 2" / 2 1/2" - 4"	40 bar / 32 bar / 25 bar
Temperatura di esercizio / Working temperature	-20°C + 150°C	
Filigrana estrema / Threaded ends	UNI ISO 228/1	
Asta antiscoppio / Anti blow-out stem		

COEFFICIENTI K _v - K _v FACTOR	
1/4" - 10	15
3/8" - 10	15
1/2" - 15	20
3/4" - 20	40
1" - 25	60
1 1/4" - 32	100
1 1/2" - 40	170
2" - 50	245
2 1/2" - 65	390
3" - 74	290
4" - 95	420



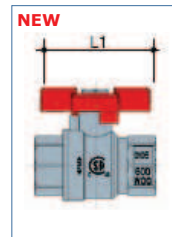
LEVA LEVER



RV60 FEMMINA-FEMMINA FEMALE-FEMALE

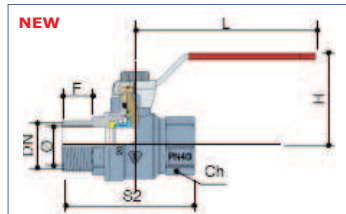
Codice	DN	O	F	S1	H	L	CH	
RV600014	G1/4	10	10	45	41	80	21	1
RV600038	G3/8	10	10	45	41	80	21	1
RV600012	G1/2	15	15	63	54	90	26	1
RV600034	G3/4	20	16	71	58	90	31	1
RV600001	G1	25	19	83	66	125	38	1
RV600114	G1 1/4	32	21	92	71	125	48	1
RV600112	G1 1/2	40	21	104	80	140	55	1
RV600002	G2	50	26	124	88	140	68	1

LEVA A FARFALLA BUTTERFLY LEVER



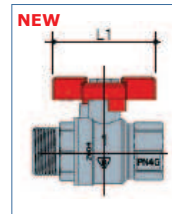
RV61 FEMMINA-FEMMINA FEMALE-FEMALE

Codice	DN	L1	
RV610014	G1/4	52	1
RV610038	G3/8	52	1
RV610012	G1/2	62	1
RV610034	G3/4	62	1
RV610001	G1	72	1



RV62 MASCHIO-FEMMINA MALE-FEMALE

Codice	DN	O	F	S2	H	L	
RV620014	G1/4	10	10	42	41	80	1
RV620038	G3/8	10	10	54	41	80	1
RV620012	G1/2	15	15	70	54	90	1
RV620034	G3/4	20	16	80	58	90	1
RV620001	G1	25	19	92	66	125	1
RV620114	G1 1/4	32	21	102	71	125	1
RV620112	G1 1/2	40	21	117	80	140	1
RV620002	G2	50	26	137	88	140	1



RV63 MASCHIO-FEMMINA MALE-FEMALE

Codice	DN	L1	
RV630014	G1/4	52	1
RV630038	G3/8	52	1
RV630012	G1/2	62	1
RV630034	G3/4	62	1
RV630001	G1	72	1

VALVOLE A SFERA LUCCHETTABILE IN OTTONE (serie pesante) / BRASS BALL VALVES LOCKABLE HANDLE (heavy serie)



IMPIEGHI: sono adatte per impiantistica idraulica, installazioni idrotermosanitarie, acquedotti ed aria compressa.

APPLICATIONS: are suitable for use in the hydraulic, sanitary, compressed air industries.

Valvola a sfera a passaggio totale, attacchi filettati F/F, maniglia lucchettabile.

Standard leva rossa.

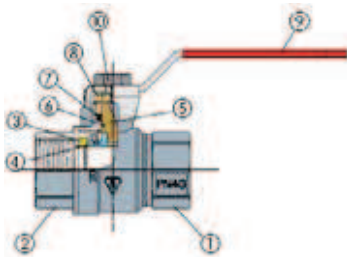
A richiesta leva blu.

Full bore ball valve, threaded ends

F/F, lockable handle.

Standard red lever.

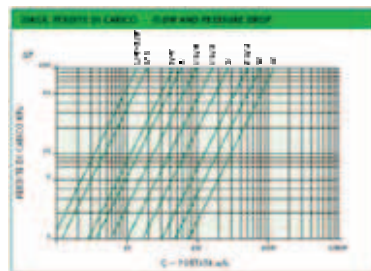
On demand blue lever.



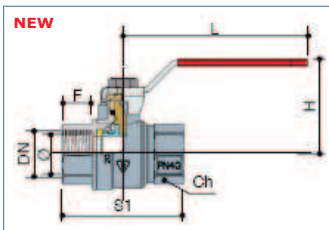
1	2	3	4	5	6	7	8	9	10
Corpo - Body	OTTONE - BRASS DN 1/4" - 1/2" EN 12542/15	MANIGLIA - HANDLE	OTTONE - BRASS DN 1/4" - 1/2" EN 12542/15	MANIGLIA - HANDLE	OTTONE - BRASS DN 1/4" - 1/2" EN 12542/15	MANIGLIA - HANDLE	OTTONE - BRASS DN 1/4" - 1/2" EN 12542/15	MANIGLIA - HANDLE	OTTONE - BRASS DN 1/4" - 1/2" EN 12542/15
Maniglia - Body end	OTTONE - BRASS DN 1/4" - 1/2" EN 12542/15	Maniglia - Body end	OTTONE - BRASS DN 1/4" - 1/2" EN 12542/15	Maniglia - Body end	OTTONE - BRASS DN 1/4" - 1/2" EN 12542/15	Maniglia - Body end	OTTONE - BRASS DN 1/4" - 1/2" EN 12542/15	Maniglia - Body end	OTTONE - BRASS DN 1/4" - 1/2" EN 12542/15
Segno - Seal	PTEE	Segno - Seal	PTEE	Segno - Seal	PTEE	Segno - Seal	PTEE	Segno - Seal	PTEE
Stato - Ball	OTTONE - BRASS DN 1/4" - 1/2" EN 12542/15	Stato - Ball	OTTONE - BRASS DN 1/4" - 1/2" EN 12542/15	Stato - Ball	OTTONE - BRASS DN 1/4" - 1/2" EN 12542/15	Stato - Ball	OTTONE - BRASS DN 1/4" - 1/2" EN 12542/15	Stato - Ball	OTTONE - BRASS DN 1/4" - 1/2" EN 12542/15
Stile - Stem	OTTONE - BRASS DN 1/4" - 1/2" EN 12542/15	Stile - Stem	OTTONE - BRASS DN 1/4" - 1/2" EN 12542/15	Stile - Stem	OTTONE - BRASS DN 1/4" - 1/2" EN 12542/15	Stile - Stem	OTTONE - BRASS DN 1/4" - 1/2" EN 12542/15	Stile - Stem	OTTONE - BRASS DN 1/4" - 1/2" EN 12542/15
O-Ring - O-Ring	EPDM - RUBBER	O-Ring - O-Ring	EPDM - RUBBER	O-Ring - O-Ring	EPDM - RUBBER	O-Ring - O-Ring	EPDM - RUBBER	O-Ring - O-Ring	EPDM - RUBBER
Controfiletto - Nut end	PTEE	Controfiletto - Nut end	PTEE	Controfiletto - Nut end	PTEE	Controfiletto - Nut end	PTEE	Controfiletto - Nut end	PTEE
Protezione - Padlock	OTTONE - BRASS DN 1/4" - 1/2" EN 12542/15	Protezione - Padlock	OTTONE - BRASS DN 1/4" - 1/2" EN 12542/15	Protezione - Padlock	OTTONE - BRASS DN 1/4" - 1/2" EN 12542/15	Protezione - Padlock	OTTONE - BRASS DN 1/4" - 1/2" EN 12542/15	Protezione - Padlock	OTTONE - BRASS DN 1/4" - 1/2" EN 12542/15
Mangia - Anello	ACCIAIO - STEEL	Mangia - Anello	ACCIAIO - STEEL	Mangia - Anello	ACCIAIO - STEEL	Mangia - Anello	ACCIAIO - STEEL	Mangia - Anello	ACCIAIO - STEEL
Dado - Nut	ACCIAIO - STEEL	Dado - Nut	ACCIAIO - STEEL	Dado - Nut	ACCIAIO - STEEL	Dado - Nut	ACCIAIO - STEEL	Dado - Nut	ACCIAIO - STEEL

DATI TECNICI - TECHNICAL DATA		
Pressione di esercizio Working pressure	1/4" - 1" 1 1/4" - 2" 2 1/2" - 4"	40 bar 32 bar 25 bar
Temperatura di esercizio Working temperature	-20°C + 150°C	
Filettatura ed estremità Threaded ends	ISO 228/1	
Arta antiscoppo Anti blow-out stem		

COEFFICIENTE KW - KWFATTORI	
1/4" - 10	15
3/8" - 15	15
1/2" - 20	20
3/4" - 25	45
1" - 25	60
1 1/4" - 32	100
1 1/2" - 40	150
2" - 50	240
2 1/2" - 60	330
3" - 74	390
4" - 95	630



LEVA LEVER

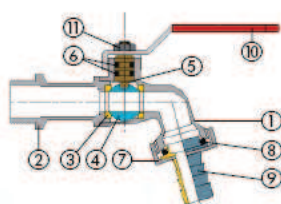


RV64 FEMMINA-FEMMINA (LUCCHETTABILE) FEMALE-FEMALE (LOCKABLE HANDLE)

Codice	DN	Ø	F	S1	H	L	Ch	
RV640014	G1/4	10	10	45	41	80	21	1
RV640038	G3/8	10	10	45	41	80	21	1
RV640012	G1/2	15	15	63	54	90	26	1
RV640034	G3/4	20	16	71	58	90	31	1
RV640001	G1	25	19	83	66	125	38	1
RV640114	G1 1/4	32	21	92	71	125	48	1
RV640112	G1 1/2	40	21	104	80	140	55	1
RV640002	G2	50	26	124	88	140	68	1

Fornita senza lucchetto.
 Supplied without padlock.

RUBINETTO DI EROGAZIONE / BALL BIBCOCK



Rubinetto di erogazione a sfera con portagomma.

Standard leva rossa.

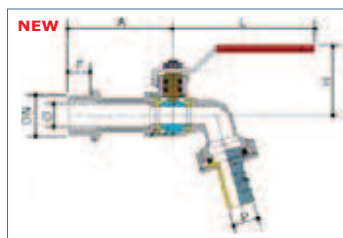
Ball bibcock with hose tail.

Standard red lever.

NO. COMPONENTE / PART NUMBER	MATERIALE / MATERIAL	FINITURA / FINISH
1 Corpo - Body	Chrom. - Bronz. / CW 1020 - 104 Br / CW 104/104	Nickelato - Nickel plated
2 Manicotto - Body end	Chrom. - Bronz. / CW 1020 - 104 Br / CW 104/104	Nickelato - Nickel plated
3 Tappo - Seal	PTFE	
4 O-ring - O-Ring	Chrom. - Bronz. / CW 1020 - 104 Br / CW 104/104	Cromato - Chrome plated
5 Albero - Stem	Chrom. - Bronz. / CW 1020 - 104 Br / CW 104/104	
6 Cuning - O-Ring	4BR	
7 Cuning - Front O-Ring	Chrom. - Bronz. / CW 1020 - 104 Br / CW 104/104	
8 Cuning - O-Ring	4BR	
9 Portagomma - Hose tail	Chrom. - Bronz. / CW 1020 - 104 Br / CW 104/104	Nickelato - Nickel plated
10 Maniglia - Handle	Acciaio - Steel	Bruciato PVC - Flame coated
11 O-ring - Seal	Acciaio - Steel	DNBRN - DNBRN

DATI TECNICI - TECHNICAL DATA	
Pressione di esercizio / Working pressure	16 bar
Temperatura di esercizio / Working temperature	-10°C + 110°C
Filatura estmità / Threaded ends	UNI ISO 228/1
Asta antiscoppio / Anti blow-out stop	

LEVA LEVER



RV65

Codice	DN	O	F	H	L	A	P	
RV650038	G3/8	12	9,5	38,3	83	50,5	15	1
RV650012	G1/2	15,2	11,5	38,3	83	50,5	15	1
RV650034	G3/4	20	15,5	40	83	59	20,5	1
RV650001	G1	26,5	13	46,6	83	60,6	26	1

VALVOLE A SFERA IN OTTONE ANTI LEGIONELLA / ANTI LEGIONELLA BRASS BALL VALVES



IMPIEGHI: sono adatte per impianti di distribuzione d'acqua potabile

Valvola a sfera a passaggio totale, anti legionella per acqua potabile, attacchi filettati F/F - M/F . Standard leva verde.

APPLICATIONS: are suitable for potable water distribution plants.

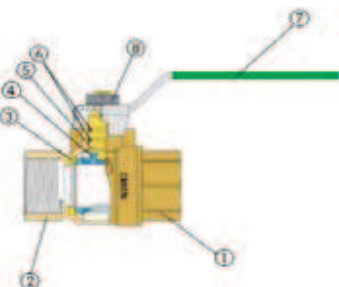
Anti-legionella full bore ball valve for potable water, threaded ends F/F - M/F . Standard green lever.

OMOLOGAZIONI INTERNAZIONALI INTERNATIONAL APROVAL

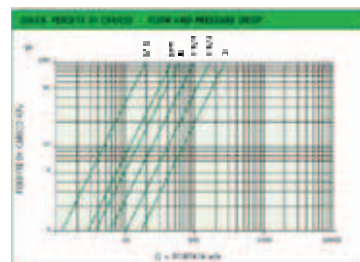


N. DENOMINAZIONE N. PART NAME	MATERIALE MATERIAL	TREATMENT TRATTAMENTO
1 Corpo-Body	Brass-Bras CW 1070, UNI EN 12075/9	
2 Manicella-Body act	Brass-Bras CW 1070, UNI EN 12075/9	
3 Segno-Seat	PTEE	
4 Sella-Seat	Brass-Bras CW 1070, UNI EN 12075/9	
5 Anello-Steel	Brass-Bras CW 1070, UNI EN 12075/9	
6 O-ring-O-ring	NBR-NBR	
7 Maniglia-Handle	Aciano-Steel	Steel PFC - Fluke coated
8 Dado-Nut	Aciano-Steel	Decor. Decolored

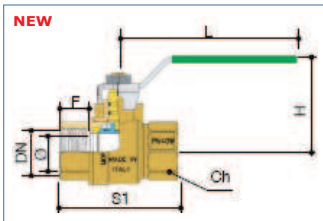
DATI TECNICI - TECHNICAL DATA	
Pressione di esercizio Working pressure	25 bar
Temperatura di esercizio Working temperature	-10°C + 90°C
Filigrana estesa Threaded ends	UNI ISO 771 Rp
Atta allacciamento Anti blow-out stud	



COEFFICIENTE KW - KW FACTOR	
1/2" - 15	20
3/8" - 20	45
1" - 25	60
1 1/4" - 32	100
1 1/2" - 40	100
2" - 50	245



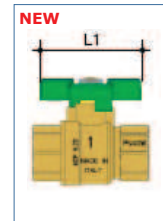
LEVA LEVER



RV66 FEMMINA-FEMMINA FEMALE-FEMALE

Codice	DN	O	F	S1	H	L	CH	
RV660038	G3/8	10	10	45	41	80	21	1
RV660012	G1/2	15	15	63	54	90	26	1
RV660034	G3/4	20	16	71	58	90	31	1
RV660001	G1	25	19	83	66	125	38	1
RV660114	G1 1/4	32	21	92	71	125	48	1
RV660112	G1 1/2	40	21	104	80	140	55	1
RV660002	G2	50	26	124	88	140	68	1

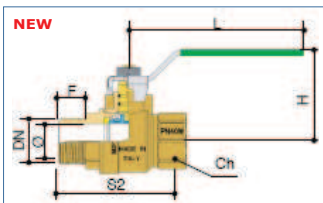
LEVA A FARFALLA BUTTERFLY LEVER



RV67 FEMMINA-FEMMINA FEMALE-FEMALE

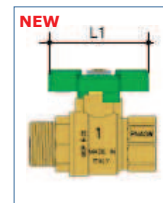
Codice	DN	L1	
RV670038	G3/8	52	1
RV670012	G1/2	62	1
RV670034	G3/4	62	1
RV670001	G1	72	1

NEW



RV68 MASCHIO-FEMMINA MALE-FEMALE

Codice	DN	O	F	S2	H	L	CH	
RV680038	G3/8	10	10	54	41	80	21	1
RV680012	G1/2	15	15	70	54	90	26	1
RV680034	G3/4	20	16	80	58	90	31	1
RV680001	G1	25	19	92	66	125	38	1
RV680114	G1 1/4	32	21	102	71	125	48	1
RV680112	G1 1/2	40	21	117	80	140	55	1
RV680002	G2	50	26	137	88	140	68	1



RV69 MASCHIO-FEMMINA MALE-FEMALE

Codice	DN	L1	
RV690038	G3/8	52	1
RV690012	G1/2	62	1
RV690034	G3/4	62	1
RV690001	G1	72	1

ANTI-LEGIONELLA - Il tipo di sfera utilizzata permette di evitare il ristagno dell'acqua nella valvola. In questo modo si evita che i batteri, eventualmente contenuti nell'acqua, possano rimanere a lungo nell'impianto al contrario delle normali valvole.

ANTI-LEGIONELLA - This type of ball prevents water from stagnating in the valve. In this case the bacteria, that may be in water, cannot remain in the piping for a long time unlike the other traditional valves.

ANTIGELO - Il tipo di sfera utilizzata permette di mantenere sempre in comunicazione corpo valvola-sfera - tubazione, evitando che l'acqua gelando, possa creare pressioni tali sul corpo valvola sino a provocarne la rottura.

FROST-PROOF - Thanks to this particular shape of the ball the valve body, the ball and the piping are always connected so that frosted water cannot put the valve body under pressure and break it.

VALVOLE A SFERA IN OTTONE (per gas) / BRASS BALL VALVES (for gas)



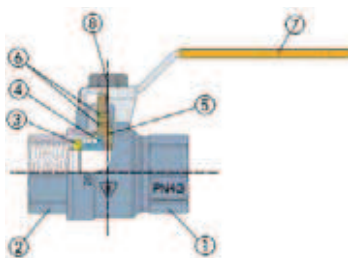
IMPIEGHI: sono adatte per impianti di distribuzione gas a media e bassa pressione, ed idrocarburi.

Valvola a sfera per gas a passaggio totale, attacchi filettati F/F - M/F . Standard leva gialla.

APPLICATIONS: are suitable for medium and low pressure gas distribution plants and for hydrocarbons.

Full bore ball valve for gas, threaded ends F/F - M/F . Standard yellow lever.

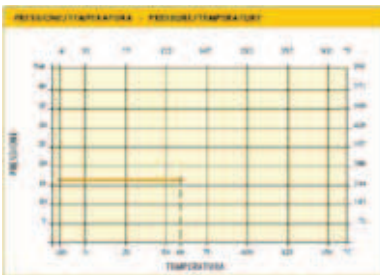
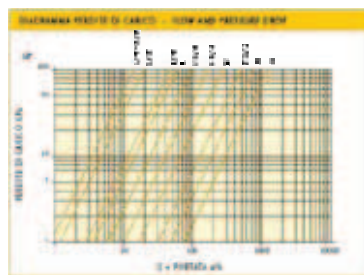
OMOLOGAZIONI INTERNAZIONALI INTERNATIONAL APPROVAL



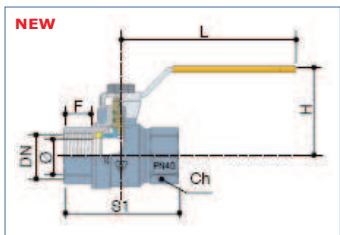
N. DESIGNAZIONE / PART NAME	MATERIALE / MATERIAL	TRATTAMENTO / TREATMENT
1 Corpo / Body	Ottone / Brass CW 619A - UNI EN 12047/8	Nickel - Nickel plated
2 Manicotto / End nut	Ottone / Brass CW 619A - UNI EN 12047/8	Nickel - Nickel plated
3 Tappo / Cap	PTFE	
4 Vano / Ball	Ottone / Brass CW 619A - UNI EN 12047/8	Cromato / Chromate
5 Vite / Bolt	Ottone / Brass CW 619A - UNI EN 12047/8	
6 O-ring / O-ring	NBR	
7 Anello / Seal	Acero / Steel	Black PVC / Black steel
8 Vite / Bolt	Acero / Steel	Black / Black steel

DATI TECNICI - TECHNICAL DATA		
Pressione di esercizio / Working pressure	1/4" - 2"	20 bar
Temperatura di esercizio / Working temperature	-20°C + 60°C	
Filettatura estrema / Threaded ends	UNISO 7/1 Rp	
Asia antiscoppo / Anti blow-out stem		

COEFFICIENTE KW - KW FACTOR		
1/4" - 30	15	
3/8" - 30	15	
1/2" - 15	20	
3/4" - 20	45	
1" - 25	60	
1 1/4" - 32	100	
1 1/2" - 40	170	
2" - 50	245	
2 1/2" - 60	330	
3" - 70	500	
4" - 95	1230	



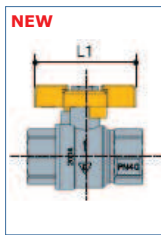
LEVA LEVER



RV70 FEMMINA-FEMMINA FEMALE-FEMALE

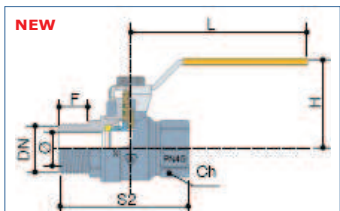
Codice	DN	Ø	F	S1	H	L	CH	
RV700038	G3/8	10	10	45	41	80	21	1
RV700012	G1/2	15	15	63	54	90	26	1
RV700034	G3/4	20	16	71	58	90	31	1
RV700001	G1	25	19	83	66	125	38	1
RV700114	G1 1/4	32	21	92	71	125	48	1
RV700112	G1 1/2	40	21	104	80	140	55	1
RV700002	G2	50	26	124	88	140	68	1

LEVA A FARFALLA BUTTERFLY LEVER



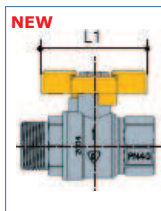
RV71 FEMMINA-FEMMINA FEMALE-FEMALE

Codice	DN	L1	
RV710038	G3/8	52	1
RV710012	G1/2	62	1
RV710034	G3/4	62	1
RV710001	G1	72	1



RV72 MASCHIO-FEMMINA MALE-FEMALE

Codice	DN	Ø	F	S2	H	L	CH	
RV720038	G3/8	10	10	54	41	80	21	1
RV720012	G1/2	15	15	70	54	90	26	1
RV720034	G3/4	20	16	80	58	90	31	1
RV720001	G1	25	19	92	66	125	38	1
RV720114	G1 1/4	32	21	102	71	125	48	1
RV720112	G1 1/2	40	21	117	80	140	55	1
RV720002	G2	50	26	137	88	140	68	1



RV73 MASCHIO-FEMMINA MALE-FEMALE

Codice	DN	L1	
RV730038	G3/8	52	1
RV730012	G1/2	62	1
RV730034	G3/4	62	1
RV730001	G1	72	1