

## DATI TECNICI ACCESSORI STANDARD INOX AISI 316

### AISI 316 STANDARD ACCESSORIES TECHNICAL DATA

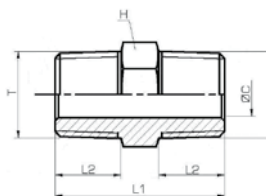
<b>Fluido</b> <i>Fluid</i>	<b>Aria compressa, acqua ed altri fluidi compatibili con i materiali costituenti i raccordi</b> <i>Compressed air, water and other fluids compatible with fittings materials</i>				
<b>Pressione di esercizio</b> <i>Working pressure</i>	<b>PN 350 per i codici serie AX59-AX60K-AX61-AX62K PN150 per tutti gli altri codici</b> <i>PN 350 for codes series AX59-AX60K-AX61-AX62K PN150 for all the other codes</i>				
<b>Temperatura di utilizzo</b> <i>Temperature range</i>	<b>-20°C +180°C</b> <i>-20°C +180°C</i>				
<b>Applicazioni</b> <i>Applications</i>	<b>1)Alimentare</b> <i>1)Food</i>	<b>2)Chimico</b> <i>2)Chemical</i>	<b>3 )Cosmetico</b> <i>3)Cosmetic</i>	<b>4)Farmaceutico</b> <i>4)Pharmaceutical</i>	<b>5 )Navale</b> <i>5)Naval</i>
<b>Materiali</b> <i>Materials</i>	<b>Corpo Acciaio AISI 316 per i codici serie AX52K-AX53-AX54K-AX55K-AX56-AX79K</b> <b>Corpo Acciaio AISI 316 forgiato secondo norma ASME-SA-182 316 BS970 316-S31 DIN 4401</b> <b>Per i codici serie AX59-60K-61-62K</b> <i>Body AISI 316 Steel for codes series AX52K-AX53-AX54K-AX55K-AX56-AX79K</i> <i>Body AISI 316 Steel forged according to standard ASME-SA-182 316 BS970 316-S31 DIN 4401</i> <i>for codes AX59-60K-61-62K</i>				
<b>Filettatura Gas conica BSPT cilindrica BSPP.</b> <i>Thread types Gas Taper BSPT Parallel gas BSPP.</i>					
<b>Filettature da 1/8" a 1"</b> <i>Threads from 1/8" to 1"</i>					

**AX52K**



**NEW**

**NIPPLO CONICO BSPT**  
**NIPPLE TAPER BSPT**



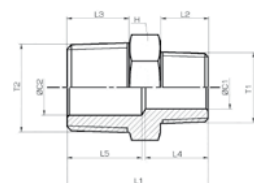
Codice/Code	T	PN(bar)	ØC	L1	L2	H						
AX52K1818	R1/8"	150	5	24	9,0	12						1
AX52K1414	R1/4"	150	7	27	10,5	14						1
AX52K3838	R3/8"	150	10	30	11,5	17						1
AX52K1212	R1/2"	150	13	38	15,0	22						1
AX52K3434	R3/4"	150	18	46	18,0	27						1

**AX52K**



**NEW**

**NIPPLO CONICO RIDOTTO BSPT**  
**REDUCER NIPPLE TAPER BSPT**



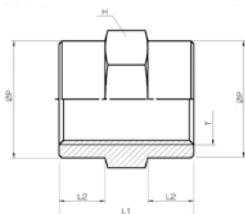
Codice/Code	T1	T2	PN(bar)	ØC1	ØC2	L1	L2	L3	L4	L5	H	
AX52K1814	R1/8"	R1/4"	150	7	5	25,5	10,5	9,0	15,00	9,9	14	1
AX52K1438	R1/4"	R3/8"	150	7	10	29,0	10,5	11,5	13,10	15,0	17	1
AX52K1412	R1/4"	R1/2"	150	7	13	33,0	10,5	15,0	13,27	18,0	22	1
AX52K3812	R3/8"	R1/2"	150	10	13	34,0	11,5	15,0	15,10	18,0	22	1
AX52K1234	R1/2"	R3/4"	150	13	18	43,0	15,0	18,0	19,60	22,0	27	1

**AX53**



**NEW**

**MANICOTTO**  
**SLEEVE**



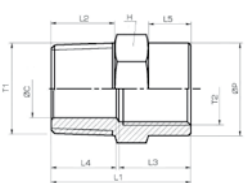
Codice/Code	T	PN(bar)	ØP	L1	L2	H						
AX531818	G1/8"	150	13,0	15	5,0	14,0						1
AX531414	G1/4"	150	16,5	22	7,5	17,0						1
AX533838	G3/8"	150	21,5	25	8,5	22,0						1
AX531212	G1/2"	150	26,5	32	11,0	27,0						1
AX533434	G3/4"	150	31,5	34	12,0	32,0						1

**AX54K**



**NEW**

**RIDUZIONE MASCHIO-FEMMINA CONICO BSPT**  
**REDUCER MALE-FEMALE TAPER BSPT**



Codice/Code	T1	T2	PN(bar)	ØP	ØC	L1	L2	L3	L4	L5	H	
AX54K1418	R1/4"	G1/8"	150	13,5	7,0	23,5	11,0	9	13,0	7,0	14	1
AX54K3814	R3/8"	G1/4"	150	16,5	10,0	26,5	11,5	12	13,1	8,0	17	1
AX54K1238	R1/2"	G3/8"	150	21,4	13,0	33,0	15,0	17	15,4	10,0	22	1

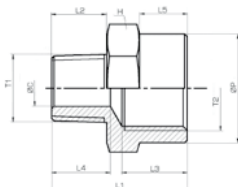
**AX55K**



**NEW**

**MAGGIORAZIONE MASCHIO-FEMMINA CONICO BSPT**

**EXTENSION MALE-FEMALE TAPER BSPT**



Codice/Code	T1	T2	PN(bar)	ØC	ØP	L1	L2	L3	L4	L5	H	
AX55K1814	R1/8"	G1/4"	150	5	16,5	22	8	11,0	9,1	8,0	17	1
AX55K1438	R1/4"	G3/8"	150	7	21,5	27,0	11	13,0	11,7	9,5	22	1
AX55K3812	R3/8"	G1/2"	150	10	26,5	30,0	11	15,0	12,4	11,5	27	1

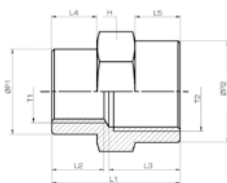
**AX56**



**NEW**

**MANICOTTO RIDOTTO**

**REDUCING SLEEVE**



Codice/Code	T1	T2	PN(bar)	ØP1	ØP2	L1	L2	L3	L4	L5	H	
AX561814	G1/8"	G1/4"	150	13,5	16,5	23,0	9,1	13	7,0	9,0	17	1
AX561438	G1/4"	G3/8"	150	18	21,5	27,0	11,0	15	9,5	9,5	22	1
AX561412	G1/4"	G1/2"	150	18	26,5	30,0	10,8	17	9,5	10,5	27	1
AX563812	G3/8"	G1/2"	150	21,5	26,5	30,0	11,8	17	8,0	13,0	27	1
AX561234	G1/2"	G3/4"	150	26,5	31,5	36,0	14,6	20	11,0	15,0	32	1

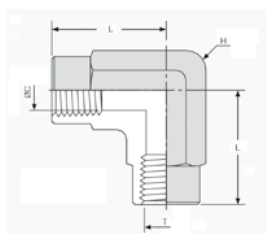
**AX59**



**NEW**

**GOMITO FEMMINA**

**ELBOW FEMALE**



Codice/Code	T	PN(bar)	ØC	L	H							
AX590018	G1/8"	375	7,8	24,0	14,3							1
AX590014	G1/4"	380	12,0	26,8	19,1							1
AX590038	G3/8"	340	16,0	26,8	22,2							1
AX590012	G1/2"	306	12,0	30,3	27,0							1
AX590034	G3/4"	238	20,0	37,2	33,3							1
AX590001	G1"	265	31,0	47,5	41,3							1

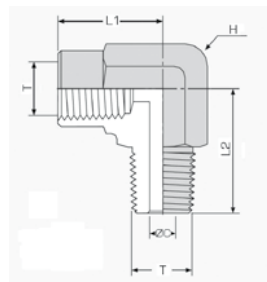
**AX60K**



**NEW**

**GOMITO MASCHIO FEMMINA CONICO BSPT**

**ELBOW MALE FEMALE TAPER BSPT**

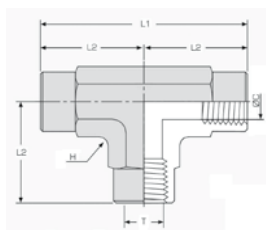


Codice/Code	T	PN(bar)	ØC	L1	L2	H						
AX60K0018	R1/8"	375	4,8	22,3	22,9	14,3						1
AX60K0014	R1/4"	380	7,0	26,7	28,3	19,1						1
AX60K0038	R3/8"	380	10,2	26,7	32,2	22,2						1
AX60K0012	R1/2"	306	12,3	30,2	39,4	27,0						1
AX60K0034	R3/4"	238	15,3	36,4	40,8	33,3						1
AX60K0001	R 1"	265	22,0	48,0	48,0	41,3						1

**AX61**



**NEW**



**T FEMMINA**

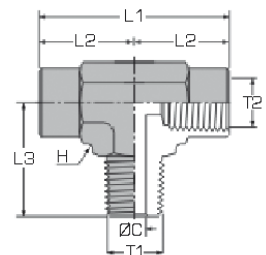
**T FEMALE**

Codice/Code	T	PN(bar)	ØC	L1	L2	H						
AX610018	G1/8"	375	8,6	43,8	21,90	14,3						1
AX610014	G1/4"	380	11,4	53,5	26,75	19,1						1
AX610038	G3/8"	340	15,0	54,0	27,00	22,2						1
AX610012	G1/2"	306	18,5	61,5	30,75	27,0						1
AX610034	G3/4"	238	23,9	74,0	37,00	33,3						1
AX610001	G1"	265	29,7	96,0	48,00	41,3						1

**AX62K**



**NEW**



**T CENTRALE CONICO BSPT**

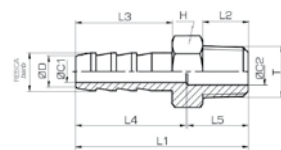
**CENTRE T MALE TAPER BSPT**

Codice/Code	T1	T2	PN(bar)	ØC	L1	L2	L3	H(Hex)				
AX62K0018	R1/8"	G1/8"	374	4,8	52,8	26,4	22,1	14,3 (9/16")				1
AX62K0014	R1/4"	G1/4"	380	7,1	59,4	29,7	29,7	19,1 (3/4")				1
AX62K0038	R3/8"	G3/8"	340	9,6	72,1	36,1	32,0	22,2 (7/8")				1
AX62K0012	R1/2"	G1/2"	306	11,9	79,2	39,6	39,6	27 (1" 1/16)				1

**AX69K**



**NEW**



**PORTAGOMMA MASCHIO CONICO BSPT**

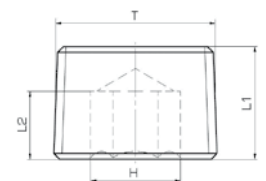
**HOSE MALE ADAPTOR TAPER BSPT**

Codice/Code	T	ØD	L1	L2	L3	L4	L5	ØC1	ØC2	H	Cresta barb	
AX69K1806	R1/8"	6	34,0	9,0	19	21,7	12	4	5	12	7,2	1
AX69K1408	R1/4"	8	35,5	10,5	19	21,1	14	5,5	7	14	9,2	1
AX69K3810	R3/8"	10	41,5	11,5	23	25,9	15	8	10	17	11,2	1
AX69K1214	R1/2"	14	51,0	15,0	28	32,4	18	11	13	22	15,2	1
AX69K3420	R 3/4"	20	65,0	18,0	37	40,8	23	14	18	27	21,0	1

**AX79K**



**NEW**



**TAPPO SCOMPARSA CONICO BSPT**

**HIDDEN PLUG-TAPER BSPT**

Codice/Code	T1	PN(bar)	L1	L2	H							
AX79K0018	R1/8"	150	8,2	5,0	5,1							1
AX79K0014	R1/4"	150	10,2	6,0	6,1							1
AX79K0038	R3/8"	150	11,6	7,0	8,1							1
AX79K0012	R1/2"	150	13,3	8,0	10,1							1
AX79K0034	R3/4"	150	15	9,0	12,1							1