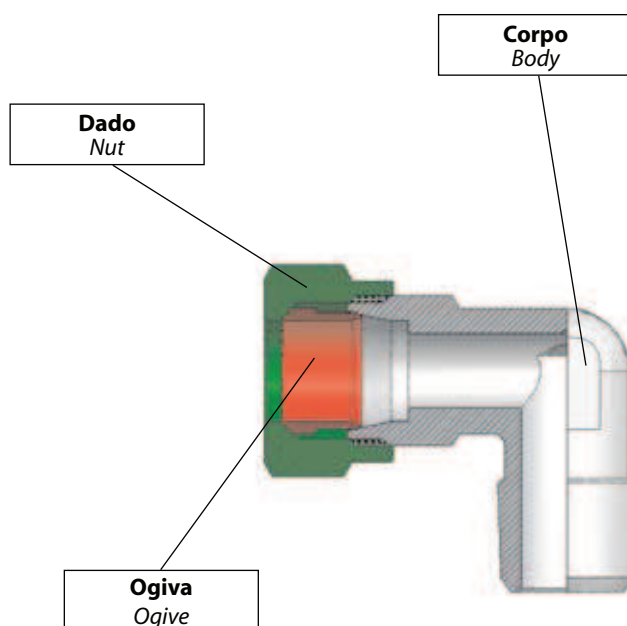


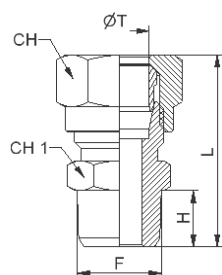
DATI TECNICI DEI RACCORDI AD OGIVA IN OTTONE

BRASS COMPRESSION FITTINGS TECHNICAL DATA

Fluido <i>Fluid</i>	Aria compressa, acqua (altri fluidi a richiesta) <i>Compressed air, water (other fluids on request)</i>			
Applicazioni <i>Applications</i>	Pneumatica (idraulica a bassa pressione) <i>Pneumatic (hydraulic systems with low pressure)</i>			
Temperature e pressioni <i>Pression and temperature</i>	Le temperature e le pressioni dipendono dalle caratteristiche del tubo impiegato. <i>Pressions and temperatures depend on tube features.</i>			
Tubi consigliati <i>Recommended tubes</i>	1)Rame <i>1)Copper</i>	2)Ferro <i>2)Iron</i>	3)Acciaio <i>3)Steel</i>	4)Ottone <i>4)Brass</i>
Nota <i>Note</i>	Per i tubi plastici inserire all'interno del tubo la boccola di supporto art. RG62. <i>For plastic tubes insert inside the tube the support buckle art. RG62</i>			
Tolleranze <i>Tolerances</i>	+/- 0.10 mm			
Materiali <i>Materials</i>	Corpo <i>Body</i>	Ottone nichelato CW614 N / CW617 N <i>Nickel plated brass CW614 N / CW617 N</i>		
	Ogiva <i>Ogive</i>	Ottone CW614 N / CW617 N <i>Brass CW614 N / CW617 N</i>		
	Dado <i>Nut</i>	Ottone nichelato CW614 N / CW617 N <i>Nickel plated brass CW614 N / CW617 N</i>		
Filettatura <i>Thread types</i>	BSP cilindrica UNI-ISO228. <i>BSPP cylindric UNI-ISO228.</i>			
	BSP conica UNI-ISO 7. <i>BSPT conic UNI-ISO 7.</i>			
	Metrica ISO/R 262. <i>Metric ISO/R 262.</i>			
Diametri e filetti <i>Threads and diameters</i>	Diametri da 4 mm a 18 mm <i>Diameters from 4 mm to 18 mm</i>			
	Filettature da 1/8" a 1/2" <i>Threads from 1/8" to 1/2"</i>			
Dado, ogiva e sede <i>Nut, ogive</i>	A norma DIN 3861 - 3870 <i>Norme DIN 3861 - 3870</i>			



RG51K

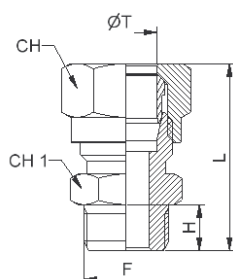


DIRITTO MASCHIO CONICO BSPT

MALE STRAIGHT TAPER BSPT

Codice/Code	ØT	F	H	L	CH	CH 1	
RG51K1804	4	R1/8	8	27	10	11	100
RG51K1806	6	R1/8	8	28	12	11	100
RG51K1406	6	R1/4	11	31.5	12	14	100
RG51K1808	8	R1/8	8	29.5	14	12	100
RG51K1408	8	R1/4	11	33	14	14	100
RG51K3808	8	R3/8	11.5	33	14	17	50
RG51K1410	10	R1/4	11	33	19	16	50
RG51K3810	10	R3/8	11.5	38	19	17	50
RG51K1210	10	R1/2	14	40.5	22	19	20
RG51K3812	12	R3/8	11.5	39	22	19	20
RG51K1212	12	R1/2	14	41	22	22	20
RG51K1214	14	R1/2	14	42.5	27	22	20
RG51K1215	15	R1/2	14	42.5	27	22	20
RG51K1216	16	R1/2	14	42	30	24	10
RG51K1218	18	R1/2	14	43	32	26	10

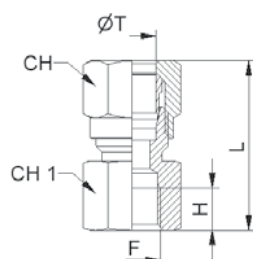
RG51



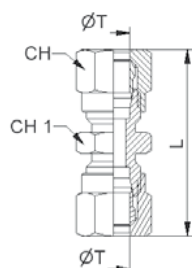
DIRITTO MASCHIO CILINDRICO BSPP

MALE STRAIGHT PARALLEL BSPP

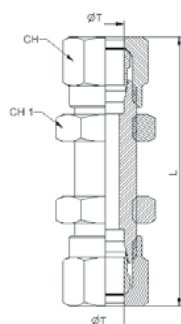
Codice/Code	ØT	F	H	L	CH	CH 1	
RG511804	4	G1/8	6	25	10	14	100
RG511806	6	G1/8	6	26	12	14	100
RG511406	6	G1/4	8	29.5	17	12	100
RG511808	8	G1/8	6	27.5	14	14	100
RG511408	8	G1/4	8	30	14	17	50
RG513808	8	G3/8	9	30.5	19	14	50
RG511410	10	G1/4	8	34.5	19	17	50
RG513810	10	G3/8	9	36	19	19	50

RG52

FEMMINA DIRITTO CILINDRICO BSPP
FEMALE STRAIGHT PARALLEL BSPP

Codice/Code	ØT	F	H	L	CH	CH 1		
RG521804	4	G1/8	6.5	24.5	10	14		100
RG521806	6	G1/8	6.5	26	12	14		100
RG521406	6	G1/4	8	30.5	12	17		100
RG521808	8	G1/8	6.5	26.5	14	14		100
RG521408	8	G1/4	8	31	14	17		100
RG523808	8	G3/8	10	31	14	20		50
RG521410	10	G1/4	8	35.5	19	17		50
RG523810	10	G3/8	10	36.5	19	20		50
NEW RG523812	12	G3/8	11,5	37	20	22		10
NEW RG521212	12	G1/2	15	38,5	24	22		10
NEW RG521214	14	G1/2	15	40	24	27		10
NEW RG521215	15	G1/2	15	40,5	24	27		10
NEW RG521216	16	G1/2	16	41,5	24	30		10
NEW RG521218	18	G1/2	16	43	24	32		10

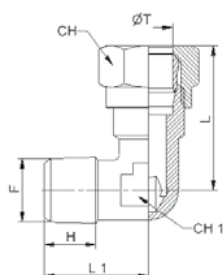
RG53

DIRITTO INTERMEDIO
STRAIGHT INTERMEDIATE

Codice/Code	ØT	L	CH	CH 1				
RG530004	4	33.5	10	10				50
RG530006	6	36.5	12	12				50
RG530008	8	38.5	14	14				50
RG530010	10	47.5	19	17				20
RG530012	12	50.5	22	19				20
RG530014	14	55.5	27	24				10
RG530015	15	55.5	27	24				10
NEW RG530016	16	58	24	30				10
NEW RG530018	18	60	26	32				10

RG54

PASSALAMIERA
UNION BULKHEAD

Codice/Code	ØT	L	CH	CH 1				
RG540006	6	51.5	12	14				50
RG540008	8	55.5	14	16				50
RG540010	10	62.5	19	19				20
RG540012	12	64.5	22	22				20
NEW RG540014	14	69.5	25	27				10
RG540015	15	69.5	25	27				10

RG55K

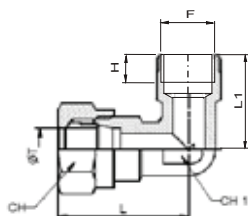


GOMITO MASCHIO CONICO BSPT

ELBOW MALE TAPER BSPT

Codice/Code	ØT	F	H	L	L1	CH	CH1	
RG55K1804	4	R1/8	8	21	16.5	10	10	100
RG55K1806	6	R1/8	8	23	16.5	12	10	100
RG55K1406	6	R1/4	12.5	24.5	22.5	12	11	100
RG55K1808	8	R1/8	8	24	16.5	14	10	100
RG55K1408	8	R1/4	11	24	20	14	11	50
RG55K3808	8	R3/8	11	32.5	24.1	14	14	50
RG55K1410	10	R1/4	12.5	32	24	19	13	50
RG55K3810	10	R3/8	11.5	32	24	19	17	50
RG55K1210	10	R1/2	14	34	28.5	19	16	20
RG55K3812	12	R3/8	11.5	34.5	25.5	22	15	20
RG55K1212	12	R1/2	14	34.5	28.5	22	15	20
RG55K1214	14	R1/2	14	38	30	27	17	20
RG55K1215	15	R1/2	14	38	30	27	17	20
RG55K1216	16	R1/2	14	39.5	31.5	30	19	10
RG55K1218	18	R1/2	14	44	34	32	22	10

RG55F

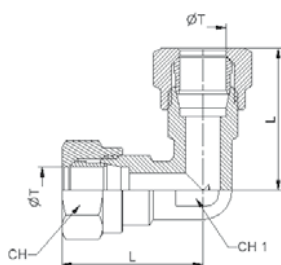


GOMITO FEMMINA CILINDRICO BSPP

ELBOW FEMALE PARALLEL BSPP

Codice/Code	ØT	F	H	L	L1	CH	CH1	
RG55F1804	4	G1/8	8	22	20	10	9	50
RG55F1806	6	G1/8	8	24	20	12	9	50
RG55F1406	6	G1/4	11	27	25.5	12	13	50
RG55F1808	8	G1/8	8	24	20	14	11	50
RG55F1408	8	G1/4	11	27.5	25.5	14	13	50

RG56

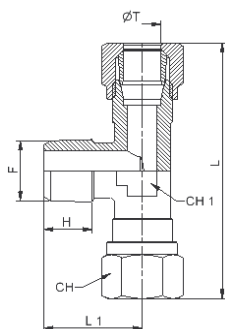


L INTERMEDIO

L INTERMEDIATE

Codice/Code	ØT	L	CH	CH1				
RG560004	4	21	10	9				100
RG560006	6	23	12	9				50
RG560008	8	24	14	11				50
RG560010	10	32	19	13				20
RG560012	12	34.5	22	15				10
RG560014	14	38	27	17				10
RG560015	15	38	27	17				10
RG560016	16	39.5	30	19				10
RG560018	18	44	32	22				10

RG57K

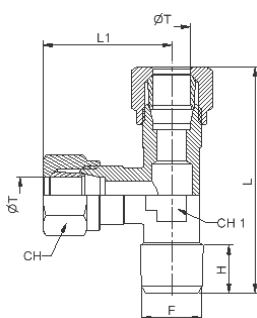


T AL CENTRO CONICO BSPT

CENTRAL T TAPER BSPT

Codice/Code	ØT	F	H	L	L1	CH	CH1	
RG57K1804	4	R1/8	8	42	16	10	9	100
RG57K1806	6	R1/8	8	46	16.5	12	10	50
RG57K1406	6	R1/4	11	48	20	12	11	50
RG57K1808	8	R1/8	8	48	17	14	11	50
RG57K1408	8	R1/4	11	48	20	14	11	20
RG57K3808	8	R3/8	11.5	54	24	14	13	20
RG57K1410	10	R1/4	11	64	23.5	19	13	20
RG57K3810	10	R3/8	11.5	64	24	19	13	20
RG57K3812	12	R3/8	11.5	69	25.5	22	15	20
RG57K1212	12	R1/2	14	69	28.5	22	15	20
RG57K1214	14	R1/2	14	76	30	27	17	10
RG57K1215	15	R1/2	14	76	30	27	17	10
RG57K1216	16	R1/2	14	79	31.5	30	19	10
RG57K1218	18	R1/2	14	88	34	32	22	10

RG58K

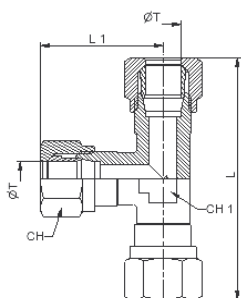


T LATERALE CONICO BSPT

LATERAL T MALE TAPER BSPT

Codice/Code	ØT	F	H	L1	L	CH	CH1	
RG58K1804	4	R1/8	8	21	37	10	9	100
RG58K1806	6	R1/8	8	23	39	10	9	50
RG58K1406	6	R1/4	11	24.5	44.5	12	11	50
RG58K1808	8	R1/8	8	24	41	14	11	50
RG58K1408	8	R1/4	11	24	44	14	11	20
RG58K3808	8	R3/8	11.5	27	51	14	13	20
RG58K1410	10	R1/4	11	32	55.5	19	13	20
RG58K3810	10	R3/8	11.5	32	56	19	13	20
RG58K3812	12	R3/8	11.5	34.5	60	22	15	20
RG58K1212	12	R1/2	14	34.5	63	22	15	20
RG58K1214	14	R1/2	14	38	68	27	17	10
RG58K1215	15	R1/2	14	38	68	27	17	10
RG58K1216	16	R1/2	14	39.5	71	30	19	10
RG58K1218	18	R1/2	14	44	78	32	22	10

RG59



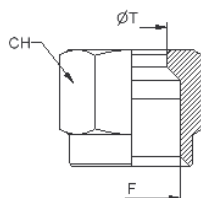
T INTERMEDIO

T INTERMEDIATE

Codice/Code	ØT	L	L1	CH	CH1			
RG590004	4	42	21	10	9			100
RG590006	6	46	16.5	12	10			50
RG590008	8	48	24	14	11			20
RG590010	10	64	32	19	13			20
RG590012	12	69	34.5	22	15			20
RG590014	14	76	38	27	17			10
RG590015	15	76	38	27	17			10
RG590016	16	79	39.5	30	19			10
RG590018	18	88	44	32	22			10

RG60

DADO

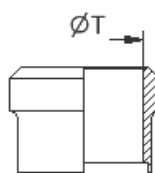


NUT

Codice/Code	ØT	F	CH						
RG600004	4	M8x1	10						100
RG600006	6	M10x1	12						100
RG600008	8	M12x1	14						100
RG600010	10	M16x1.5	19						100
RG600012	12	M18x1.5	22						100
RG600014	14	M22x1.5	27						50
RG600015	15	M22x1.5	27						50
RG600016	16	M24x1.5	30						50
RG600018	18	M26x1.5	32						50

RG61

OGIVA

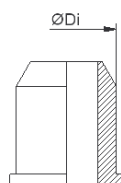


OGIVE

Codice/Code	ØT								
RG610004	4								100
RG610006	6								100
RG610008	8								100
RG610010	10								100
RG610012	12								100
RG610014	14								100
RG610015	15								100
RG610016	16								100
RG610018	18								100

RG62

BOCCOLA DI SUPPORTO



SUPPORT BUCKLE

Codice/Code	ØDi								
RG620002	2								100
RG620025	2.5								100
RG620004	4								100
RG620006	6								100
RG620008	8								100
RG620010	10								100
RG620012	12								100
RG620014	14								100
RG620015	15								100
RG620016	16								100