

DATI TECNICI DEI RACCORDI DI ARRESTO

STOP FITTINGS TECHNICAL DATA

**Note: Arrestano il passaggio dell'aria quando il tubo è scollegato.
Utilizzati per operazioni di manutenzioni**

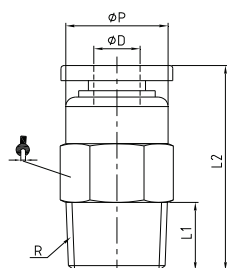
*Note: The air flow is blocked when the tube is released
Utilized for upkeep operations*

Fluido <i>Fluid</i>	Aria compressa <i>Compressed air</i>	
Pressione di esercizio <i>Working pressure</i>	Da 0 a 150 PSI (da 0 a 10 bar) <i>From 0 to 150 PSI (from 0 to 10 Bar)</i>	
Tenuta al vuoto <i>Vacuum</i>	-29,5 in Hg (- 750 mmHG 10Torr) <i>-29,5 in Hg (- 750 mmHG 10Torr)</i>	
Temperatura di utilizzo <i>Temperature range</i>	Da 32 a 140 °F (da 0 ÷ 60°C) <i>from 32 to 140°F (from 0 to 60°C)</i>	
Tubi consigliati <i>Recommended tubes</i>	1)Poliuretano 2)Poliammide 3)Polietilene 4)Nylon <i>1)Polyurethane 2)Polyamide 3)Polyethylene 4)Nylon</i>	
Tolleranze <i>Tolerances</i>	+/- 0.10 mm <i>+/- 0.10 mm</i>	
Materiali <i>Materials</i>	Corpo <i>Body</i>	Ottone nichelato o resina (pbt) <i>Nickel plated brass or resin (pbt)</i>
	Pinza <i>Lock claws</i>	Acciaio SUS 301 <i>SUS 301 Steel</i>
	Pulsante <i>Sleeve</i>	Resina (pom) <i>Resin (pom)</i>
	O-Ring <i>O-Ring</i>	NBR <i>NBR</i>
Filettatura <i>Thread types</i>	BSPT conica teflonata. <i>BSPT taper with teflon</i>	Metrica. <i>Metric.</i>
Diametri e filetti <i>Diameters and threads</i>	Da 4 mm a 12 mm <i>From 4 mm to 12 mm</i>	Da M5 a 1/2" <i>From M5 to 1/2"</i>

RF10K



NEW



DIRITTO DI ARRESTO MASCHIO CONICO BSPT

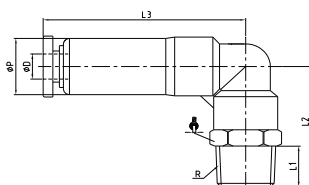
MALE STRAIGHT STOP FITTING TAPER BSPT

Codice/Code	ØD	R	L1	L2	ØP			
RF10K1804	4	R1/8	7,5	26	10	10		100
RF10K1806	6	R1/8	7,5	28	12	12		100
RF10K1406	6	R1/4	9,5	28	12	14		100
RF10K1808	8	R1/8	7,5	29	14	14		100
RF10K1408	8	R1/4	9,5	33	14	14		100
RF10K3808	8	R3/8	10,5	33	14	17		50
RF10K1410	10	R1/4	9,5	36	17	17		50
RF10K3810	10	R3/8	10,5	36	17	17		50
RF10K1210	10	R1/2	13,5	36	17	21		30
RF10K1412	12	R1/4	9,5	42	20	21		30
RF10K3812	12	R3/8	10,5	42	20	21		20
RF10K1212	12	R1/2	13,5	42	20	21		20

RF11K



NEW



GOMITO DI ARRESTO MASCHIO CONICO BSPT

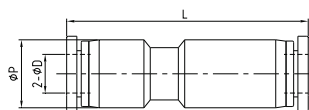
ELBOW STOP FITTING TAPER BSPT

Codice/Code	ØD	R	L1	L2	L3	ØP		
RF11M504	4	M5	3,5	21,3	31	11	10	100
RF11M604	4	M6	4	21,8	31	11	10	100
RF11K1804	4	R1/8	7,5	23,8	31	11	10	100
RF11M506	6	M5	3,5	21,7	32	13	12	100
RF11M606	6	M6	4	22,2	32	13	12	100
RF11K1806	6	R1/8	7,5	24,2	32	13	12	100
RF11K1406	6	R1/4	9,5	26,7	32	13	14	100
RF11K1808	8	R1/8	7,5	27,5	41	14,5	14	50
RF11K1408	8	R1/4	9,5	29,5	41	14,5	14	50
RF11K3808	8	R3/8	10,5	31	41	14,5	17	50
RF11K1410	10	R1/4	9,5	34,3	48	18,5	17	30
RF11K3810	10	R3/8	10,5	35,3	48	18,5	17	30
RF11K1210	10	R1/2	13,5	38,8	48	18,5	21	20
RF11K1412	12	R1/4	9,5	36	55,5	21	21	20
RF11K3812	12	R3/8	10,5	37	55,5	21	21	20
RF11K1212	12	R1/2	13,5	40	55,5	21	21	20

RF12



NEW



DIRITTO INTERMEDIO DI ARRESTO

STRAIGHT INTERMEDIATE STOP FITTING

Codice/Code	ØD	ØP	L					
RF120004	4	11,5	42					100
RF120006	6	13,5	46					100
RF120008	8	15	54					100
RF120010	10	19	58					50
RF120012	12	21,5	67					30

DATI TECNICI VALVOLE UNIDIREZIONALI

UNIDIRECTIONAL VALVES TECHNICAL DATA

Le valvole unidirezionali permettono il passaggio dell'aria in una sola direzione.

Check valves airflow is only in one direction.

Fluido <i>Fluid</i>	Aria compressa <i>Compressed air</i>	
Pressione di esercizio <i>Working pressure</i>	Da 0 a 150 PSI (da 0,1 a 10 bar) <i>From 0 to 150 PSI (from 0,1 to 10 Bar)</i>	
Tenuta al vuoto <i>Vacuum</i>	-29,5 in Hg (- 750 mmHG 10Torr) <i>-29,5 in Hg (- 750 mmHG 10Torr)</i>	
Temperatura di utilizzo <i>Temperature range</i>	Da 32 a 140 °F (da 0 ÷ 60°C) <i>From 32 to 140°F (from 0 to 60°C)</i>	
Tubi consigliati <i>Recommended tubes</i>	1)Poliuretano 2)Poliammide 3)Polietilene 4)Nylon <i>1)Polyurethane 2)Polyamide 3)Polyethylene 4)Nylon</i>	
Tolleranze <i>Tolerances</i>	+/- 0.10 mm <i>+/- 0.10 mm</i>	
Materiali <i>Materials</i>	Corpo <i>Body</i>	Ottone nichelato-alluminio- resina (pbt) <i>Nickel plated brass-aluminium- resin (pbt)</i>
	Pinza <i>Lock claws</i>	Acciaio SUS 301 <i>SUS 301 Steel</i>
	Pulsante <i>Sleeve</i>	Resina (pom) <i>Resin (pom)</i>
	O-Ring <i>O-Ring</i>	NBR <i>NBR</i>
Filettatura <i>Thread types</i>	BSPT conica teflonata. <i>BSPT taper with Teflon</i>	
Diametri e filetti <i>Diameters and threads</i>	Da 4 mm a 12 mm <i>From 4 mm to 12 mm</i>	Da M5 a 1/2" <i>From M5 to 1/2"</i>

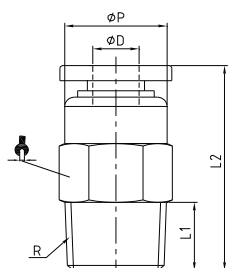
RF20K



NEW

VALVOLA UNIDIREZIONALE DIRITTO MASCHIO CONICA BSPT

UNIDIRECTIONAL VALVE MALE STRAIGHT TAPER BSPT



Codice/Code	ØD	R	L1	L2	ØP			
RF20M504	4	M5	3,5	31	10	10		100
RF20M604	4	M6	4	31,5	10	10		100
RF20K1804	4	R1/8	7,5	27	10	10		100
RF20K1806	6	R1/8	7,5	32	12	12		100
RF20K1406	6	R1/4	9,5	32	12	14		100
RF20K1808	8	R1/8	7,5	35	14	14		100
RF20K1408	8	R1/4	9,5	37	14	14		100
RF20K3810	10	R3/8	10,5	56	17	17		50
RF20K1210	10	R1/2	13,5	59	17	21		30
RF20K3812	12	R3/8	10,5	62	20	21		30
RF20K1212	12	R1/2	13,5	65	20	21		30

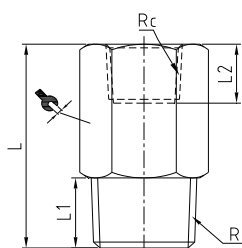
RF21K



NEW

VALVOLA UNIDIREZIONALE MASCHIO-FEMMINA CONICA BSPT

UNIDIRECTIONAL VALVE MALE-FEMALE TAPER BSPT



Codice/Code	R	Rc	L1	L2	L			
RF21K1818	R1/8	Rc1/8	7,5	8,5	28	14		100
RF21K1414	R1/4	Rc1/4	9,5	11	34	17		100
RF21K3838	R3/8	Rc3/8	10,5	12	54	21		50
RF21K1212	R1/2	Rc1/2	13,5	14	61	24		30

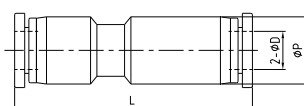
RF22



NEW

VALVOLA UNIDIREZIONALE INTERMEDIA

UNIDIRECTIONAL VALVE INTERMEDIATE



Codice/Code	ØD	ØP	L					
RF220004	4	11,5	42					100
RF220006	6	13,5	47,5					100
RF220008	8	15	56					100
RF220010	10	19	65					50
RF220012	12	21,5	73					30

DATI TECNICI VALVOLE MANUALI 3 VIE

3 WAYS HAND VALVES TECHNICAL DATA

**Le valvole a3 vie in posizione di chiusura scaricano a valle l'aria residua.
Utilizzati per operazioni di manutenzioni**

*The three-way valve, when the airflow is stopped, discharges residual pressure out.
Utilized for upkeep operations*

Fluido <i>Fluid</i>	Aria compressa <i>Compressed air</i>	
Pressione di esercizio <i>Working pressure</i>	Da 0 a 150 PSI (da 0 a 10 bar) <i>From 0 to 150 PSI (from 0 to 10 Bar)</i>	
Tenuta al vuoto <i>Vacuum</i>	-29,5 in Hg (- 750 mmHG 10Torr) <i>-29,5 in Hg (- 750 mmHG 10Torr)</i>	
Temperatura di utilizzo <i>Temperature range</i>	Da 32 a 140 °F (da 0 ÷ 60°C) <i>From 32 to 140°F (from 0 to 60°C)</i>	
Tubi consigliati Recommended tubes	1)Poliuretano 2)Poliammide 3)Polietilene 4)Nylon 1)Polyurethane 2)Polyamide 3)Polyethylene 4)Nylon	
Tolleranze <i>Tolerances</i>	+/- 0.10 mm <i>+/- 0.10 mm</i>	
Materiali <i>Materials</i>	Corpo <i>Body</i> Pinza <i>Lock claws</i> Pulsante <i>Sleeve</i> O-Ring <i>O-Ring</i>	Ottone nichelato o resina (pbt) <i>Nickel plated brass or resin (pbt)</i> Acciaio SUS 301 <i>SUS 301 Steel</i> Resina (pom) <i>Resin (pom)</i> NBR <i>NBR</i>
Filettatura <i>Thread types</i>	BSPT conica teflonata. <i>BSPT taper with Teflon</i>	
Diametri e filetti <i>Diameters and threads</i>	Da 6 mm a 12 mm <i>From 6 mm to 12 mm</i>	Da 1/8" a 1/2" <i>From 1/8" to 1/2"</i>

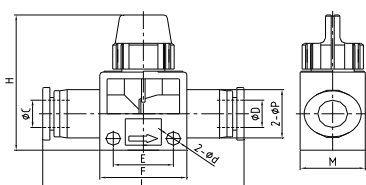
RF30

VALVOLA TUBO TUBO

VALVE TUBE-TUBE



NEW



Codice/Code	ØC	ØD	ØP	Ød	E	F	L	H	M				
RF300606	6	6	15	4,2	16,5	24	52	41	18				30
RF300806	8	6	15	4,2	16,5	24	52	41	18				30
RF300808	8	8	15	4,2	16,5	24	52	41	18				30
RF301008	10	8	21,5	4,2	21,5	29	63	45	22				10
RF301010	10	10	21,5	4,2	21,5	29	63	45	22				10
RF301210	12	10	21,5	4,2	21,5	29	63	45	22				10
RF301212	12	12	21,5	4,2	21,5	29	63	45	22				10

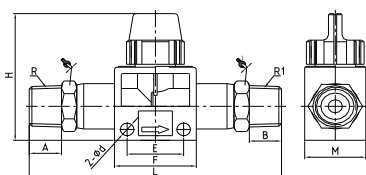
RF31K

VALVOLA MASCHIO-MASCHIO CONICO BSPT

VALVE MALE-MALE TAPER BSPT

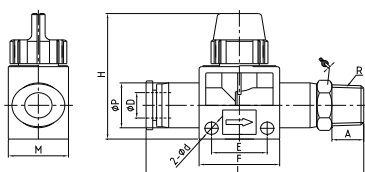


NEW



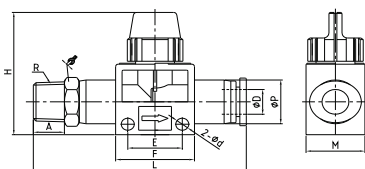
Codice/Code	R	R1	A	B	ØD	E	F	L	H	M			
RF31K1818	R1/8	R1/8	7,5	7,5	4,2	16,5	24	68	41	18	14	14	30
RF31K1418	R1/4	R1/8	9,5	7,5	4,2	16,5	24	70	41	18	14	14	30
RF31K1414	R1/4	R1/4	9,5	9,5	4,2	16,5	24	72	41	18	14	14	30
RF31K3814	R3/8	R1/4	10,5	9,5	4,2	16,5	29	74	45	22	21	21	10
RF31K3838	R3/8	R3/8	10,5	10,5	4,2	21,5	29	84	45	22	21	21	10
RF31K1238	R1/2	R3/8	13,5	10,5	4,2	21,5	29	87	45	22	21	21	10
RF31K1212	R1/2	R1/2	13,5	13,5	4,2	21,5	29	90	45	22	21	21	10

RF32K

NEW

VALVOLA TUBO-MASCHIO CONICO BSPT
VALVE TUBE MALE TAPER BSPT

Codice/Code	ØD	R	A	ØP	Ød	E	F	L	H	M		
RF32K1806	6	R1/8	7,5	15	4,2	16,5	24	63	41	18	14	30
RF32K1406	6	R1/4	9,5	15	4,2	16,5	24	65	41	18	14	30
RF32K3806	6	R3/8	10,5	15	4,2	16,5	24	66	41	18	17	10
RF32K1808	8	R1/8	7,5	15	4,2	16,5	24	63	41	18	14	30
RF32K1408	8	R1/4	9,5	15	4,2	16,5	24	65	41	18	14	30
RF32K3808	8	R3/8	10,5	15	4,2	16,5	24	66	41	18	17	10
RF32K1410	10	R1/4	9,5	21,5	4,2	21,5	29	72	45	22	21	10
RF32K3810	10	R3/8	10,5	21,5	4,2	21,5	29	73	45	22	21	10
RF32K1210	10	R1/2	13,5	21,5	4,2	21,5	29	76	45	22	21	10
RF32K1412	12	R1/4	9,5	21,5	4,2	21,5	29	72	45	22	21	10
RF32K3812	12	R3/8	10,5	21,5	4,2	21,5	29	73	45	22	21	10
RF32K1212	12	R1/2	13,5	21,5	4,2	21,5	29	76	45	22	21	10

RF33K

NEW

VALVOLA MASCHIO CONICO BSPT-TUBO
VALVE MALE TAPER BSPT-TUBE

Codice/Code	ØD	R	A	ØP	Ød	E	F	L	H	M		
RF33K1806	6	R1/8	7,5	15	4,2	16,5	24	63	41	18	14	30
RF33K1406	6	R1/4	9,5	15	4,2	16,5	24	65	41	18	14	30
RF33K3806	6	R3/8	10,5	15	4,2	16,5	24	66	41	18	17	10
RF33K1808	8	R1/8	7,5	15	4,2	16,5	24	63	41	18	14	30
RF33K1408	8	R1/4	9,5	15	4,2	16,5	24	65	41	18	14	30
RF33K3808	8	R3/8	10,5	15	4,2	16,5	24	66	41	18	17	10
RF33K1410	10	R1/4	9,5	21,5	4,2	21,5	29	72	45	22	21	10
RF33K3810	10	R3/8	10,5	21,5	4,2	21,5	29	73	45	22	21	10
RF33K1210	10	R1/2	13,5	21,5	4,2	21,5	29	76	45	22	21	10
RF33K1412	12	R1/4	9,5	21,5	4,2	21,5	29	72	45	22	21	10
RF33K3812	12	R3/8	10,5	21,5	4,2	21,5	29	73	45	22	21	10
RF33K1212	12	R1/2	13,5	21,5	4,2	21,5	29	76	45	22	21	10