

DATI TECNICI DEI RACCORDI A CALZAMENTO INOX AISI 316

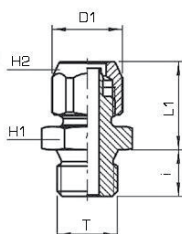
INOX AISI 316 QUICK FITTINGS TECHNICAL DATA

Fluido <i>Fluid</i>	Aria compressa, acqua ed altri fluidi aggressivi compatibili con i materiali costituenti i raccordi <i>Compressed air, water and other chemical fluids compatible with fittings materials</i>				
Pressione di esercizio <i>Working pressure</i>	25 Bar a 20°C <i>25 Bar at 20°C</i>				
Temperatura di utilizzo <i>Temperature range</i>	Da -40°C a +180°C <i>From -40°C to +180°C</i>				
Applicazioni in pneumatica <i>Applications in pneumatic</i>	1)Alimentare <i>1)Food</i>	2)Chimico <i>2)Chemical</i>	3)Cosmetico <i>3)Cosmetics</i>	4)Farmaceutico <i>4)Pharmaceutical</i>	5)Navale e oleodinamica <i>5)Naval and hydraulic</i>
Tubi consigliati <i>Recommended tubes</i>	1)PTFE <i>1)PTFE</i>	2)Polietilene <i>2)Polyethylene</i>			
Tolleranze del tubo <i>Tube tolerances</i>	+/- 0.10 mm <i>+/- 0.10 mm</i>				
Materiali <i>Materials</i>	Corpo e dado in Acciaio AISI 316 Guarnizioni per raccordi girevoli FKM (Viton) <i>Body and nut stainless steel AISI 316</i> <i>O-ring for rotating body FKM (viton)</i>				
Filettatura <i>Thread types</i>	Iso 228 BSPP cilindrica e Din 3858 BSPT conica <i>Iso 228 BSPP parallel and Din 3858 BSPT taper</i>				
Diametri e filetti <i>Threads and diameters</i>	Da 6 mm a 12 mm da 1/8" a 1/2" <i>From 6 mm to 12 mm From 1/8" to 1/2"</i>				

CX51



NEW



DIRITTO MASCHIO CILINDRICO BSPP

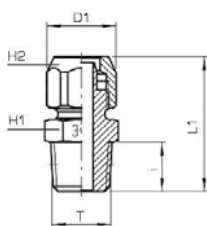
MALE STRAIGHT PARALLEL BSPP

Codice/Code	T	ØD	I	L1	D1	H1	H2				
CX511806	G1/8"	6/4	8	18,5	13,0	13	12				1
CX511406	G1/4"	6/4	10	19,0	13,0	17	12				1
CX511808	G1/8"	8/6	8	18,5	15,5	13	14				1
CX511408	G1/4"	8/6	10	19,0	15,5	17	14				1
CX511810	G1/8"	10/8	8	20,0	18,5	14	17				1
CX511410	G1/4"	10/8	10	20,5	18,5	17	17				1
CX513810	G3/8"	10/8	10	20,5	18,5	19	17				1
CX513812	G3/8"	12/10	10	22,0	21,0	19	19				1
CX511212	G1/2"	12/10	12	22,5	21,0	24	19				1

CX51K



NEW



DIRITTO MASCHIO CONICO BSPT

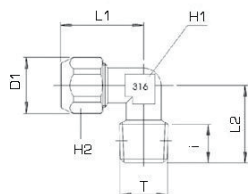
MALE STRAIGHT TAPER BSPT

Codice/Code	T	ØD	I	L1	D1	H1	H2				
CX51K1806	R1/8"	6/4	7,5	26,0	13,0	12	12				1
CX51K1406	R1/4"	6/4	11,0	30,0	13,0	14	12				1
CX51K1808	R1/8"	8/6	7,5	26,0	15,5	12	14				1
CX51K1408	R1/4"	8/6	11,0	30,0	15,5	14	14				1
CX51K1810	R1/8"	10/8	7,5	28,0	18,5	14	17				1
CX51K1410	R1/4"	10/8	11,0	32,0	18,5	14	17				1
CX51K3810	R3/8"	10/8	11,0	32,0	18,5	17	17				1
CX51K3812	R3/8"	12/10	11,5	34,0	21,0	17	19				1
CX51K1212	R1/2"	12/10	14,0	37,0	21,0	22	19				1

CX55K



NEW



GOMITO MASCHIO CONICO BSPT

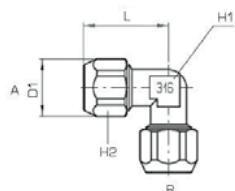
ELBOW MALE TAPER BSPT

Codice/Code	T	ØD	I	L1	L2	D1	H1	H2			
CX55K1806	R1/8"	6/4	9,0	22,5	18,5	13	10	12			1
CX55K1406	R1/4"	6/4	11,0	22,5	21,0	13	10	12			1
CX55K1808	R1/8"	8/6	9,0	22,5	18,5	15,5	10	14			1
CX55K1408	R1/4"	8/6	11,0	22,5	21,0	15,5	10	14			1
CX55K3808	R3/8"	8/6	11,5	26,5	25,0	15,5	13	14			1
CX55K1810	R1/8"	10/8	9,0	25,0	18,5	18,5	10	17			1
CX55K1410	R1/4"	10/8	11,0	25,0	21,0	18,5	10	17			1
CX55K3810	R3/8"	10/8	11,5	27,0	25,0	18,5	13	17			1
CX55K3812	R3/8"	12/10	11,5	29,0	25,0	21	13	19			1
CX55K1212	R1/2"	12/10	14,0	30,5	29,0	21	17	19			1

CX56

L INTERMEDIO

L INTERMEDIATE



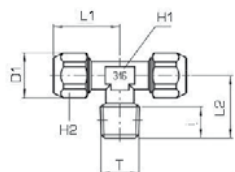
NEW

Codice/Code	ØDA	ØDB	L	D1	H1	H2					
CX560006	6/4	6/4	22,5	13,0	10	12					1
CX560008	8/6	8/6	22,5	13,5	10	12					1
CX560010	10/8	10/8	25,0	15,5	10	13					1
CX560012	12/10	12/10	29,0	21,0	13	19					1

CX57K

T AL CENTRO CONICO BSPT

CENTRAL T TAPER BSPT



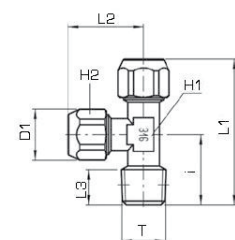
NEW

Codice/Code	T	ØD	I	L1	L2	D1	H1	H2			
CX57K1806	R1/8"	6/4	9,0	22,5	18,5	13,0	10	12			1
CX57K1406	R1/4"	6/4	11,0	22,5	21,0	13,0	10	12			1
CX57K1808	R1/8"	8/6	9,0	22,5	18,5	15,5	10	14			1
CX57K1408	R1/4"	8/6	11,0	22,5	21,0	15,5	10	14			1
CX57K1810	R1/8"	10/8	9,0	25,0	18,5	18,5	10	17			1
CX57K1410	R1/4"	10/8	11,0	25,0	21,0	18,5	10	17			1
CX57K3810	R3/8"	10/8	11,5	27,0	25,0	18,5	13	17			1
CX57K3812	R3/8"	12/10	11,5	29,0	25,0	21,0	13	19			1
CX57K1212	R1/2"	12/10	14,0	32,5	29,0	21,0	17	19			1

CX58K

T LATERALE CONICO BSPT

LATERAL T TAPER BSPT



NEW

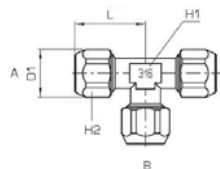
Codice/Code	T	ØD	I	L1	L2	L3	D1	H1	H2		
CX58K1806	R1/8"	6/4	9,0	41,0	22,5	19,0	13,0	10	12		1
CX58K1406	R1/4"	6/4	10,5	43,5	22,5	21,0	13,0	10	12		1
CX58K1808	R1/8"	8/6	9,0	41,0	22,5	19,0	15,0	10	14		1
CX58K1408	R1/4"	8/6	10,5	43,5	22,5	21,0	15,0	10	14		1
CX58K1810	R1/8"	10/8	9,0	43,5	25,0	19,0	18,5	10	17		1
CX58K1410	R1/4"	10/8	10,5	46,0	25,0	21,0	18,5	10	17		1
CX58K3810	R3/8"	10/8	11,5	54,0	29,0	25,0	18,5	13	17		1

CX59



NEW

T INTERMEDIO
T INTERMEDIATE



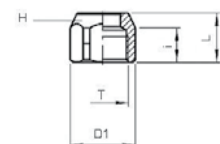
Codice/Code	ØDA	ØDB	L	D1	H1	H2					
CX590006	6/4	6/4	22,5	13,0	10	12					1
CX590008	8/6	8/6	22,5	15,6	10	14					1
CX590010	10/8	10/8	25,0	18,5	10	17					1
CX590012	12/10	12/10	29,0	21,0	13	19					1

CX60



NEW

DADO
NUT



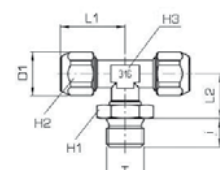
Codice/Code	G	ØD	L	I	D1	H					
CX600006	M10*1	6/4	11,5	6,0	13,1	12					1
CX600008	M12*1	8/6	11,5	6,0	15,3	14					1
CX600010	M14*1	10/8	13,5	6,5	18,5	17					1
CX600012	M16*1	12/10	14,5	6,5	21,0	19					1

CX70



NEW

T AL CENTRO GIREVOLE CILINDRICO BSPP
CENTRAL T ROTATING BODY PARALLEL BSPP



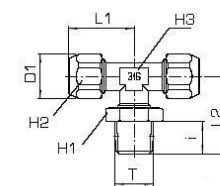
Codice/Code	T	ØOD	I	L1	L2	D1	H1	H2	H3		
CX701806	G1/8"	6/4	8	22,5	14,0	13,0	13	12	10		1
CX701406	G1/4"	6/4	10	22,5	14,5	13,0	17	12	10		1
CX701808	G1/8"	8/6	8	22,5	14	15,0	13	14	10		1
CX701408	G1/4"	8/6	10	22,5	14,5	15,0	17	14	10		1
CX701410	G1/4"	10/8	10	23,5	14,5	18,5	17	17	10		1

CX70K



NEW

T AL CENTRO GIREVOLE CONICO BSPT
CENTRAL T ROTATING BODY TAPER BSPT



Codice/Code	T	ØOD	I	L1	L2	D1	H1	H2	H3		
CX70K1806	R1/8"	6/4	7,5	22,5	21,5	13,0	13	12	10		1
CX70K1406	R1/4"	6/4	11,0	22,5	25,5	13,0	14	12	10		1
CX70K1808	R1/8"	8/6	7,5	22,5	21,5	15,0	13	14	10		1
CX70K1408	R1/4"	8/6	11,0	22,5	25,5	15,0	14	14	10		1
CX70K1410	R1/4"	10/8	11,0	25,0	25,5	18,5	14	17	10		1

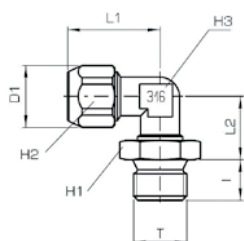
CX72



NEW

GOMITO MASCHIO GIREVOLE CILINDRICO BSPP

ELBOW MALE ROTATING BODY PARALLEL BSPP



Codice/Code	T	ØOD	I	L1	L2	D1	H1	H2	H3	
CX721806	G1/8"	6/4	8	22,5	14,0	13,0	13	12	10	1
CX721406	G1/4"	6/4	10	22,5	14,5	13,0	17	12	10	1
CX721808	G1/8"	8/6	8	22,5	14,0	15,5	13	14	10	1
CX721408	G1/4"	8/6	10	22,5	14,5	15,5	17	14	10	1
CX721410	G1/4"	10/8	10	23,5	14,5	18,5	17	17	10	1

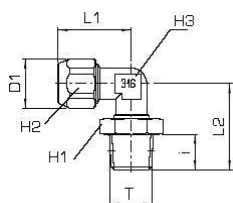
CX72K



NEW

GOMITO MASCHIO GIREVOLE CONICO BSPT

ELBOW MALE ROTATING BODY TAPER BSPT



Codice/Code	T	ØOD	I	L1	L2	D1	H1	H2	H3	
CX72K1806	R1/8"	6/4	7,5	22,5	21,5	13,0	13	12	10	1
CX72K1406	R1/4"	6/4	11,0	22,5	25,5	13,0	17	12	10	1
CX72K1808	R1/8"	8/6	7,5	22,5	21,5	15,0	13	14	10	1
CX72K1408	R1/4"	8/6	11,0	22,5	25,5	15,0	17	14	10	1
CX72K1410	R1/4"	10/8	11,0	22,5	25,5	18,5	17	17	10	1