

## DATI TECNICI DEI DOSATORI DI FLUSSO

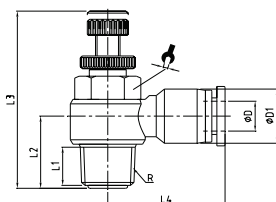
### FLOW REGULATORS TECHNICAL DATA

<b>Fluido</b> <i>Fluid</i>	<b>Aria compressa (altri fluidi a richiesta)</b> <i>Compressed air (other fluids on request)</i>			
<b>Pressione di esercizio</b> <i>Working pressure</i>	<b>TUBO</b> <i>Tube</i> Ø4 - Ø12 mm	<b>PRESSIONE</b> <i>Pressure</i> 0 ÷ 10 Bar 0 ÷ 150 PSI		
<b>Temperatura di utilizzo</b> <i>Temperature range</i>	<b>0 ÷ 60°C</b> 32 ÷ 140 °F			
<b>Tubi consigliati</b> <i>Recommended tubes</i>	<b>1)Poliuretano</b> <i>1)Polyurethane</i>	<b>2)Poliammide</b> <i>2)Polyamide</i>	<b>3)Polietilene</b> <i>3)Polyethylene</i>	<b>4)Nylon</b> <i>4)Nylon</i>
<b>Tolleranze</b> <i>Tolerances</i>	<b>+/- 0.10 mm</b>			
<b>Materiali</b> <i>Materials</i>	<b>Corpo</b> <i>Body</i> <b>Pinza</b> <i>Lock claws</i> <b>Pulsante</b> <i>Sleeve</i> <b>O-Ring</b> <i>O-Ring</i>	<b>Ottone nichelato o resina acetlica</b> <i>Nickel plated brass or acetal resin</i> <b>Acciaio SUS 301</b> <i>SUS 301 Steel</i> <b>Resina acetlica</b> <i>Acetal resin</i> <b>NBR</b> <i>NBR</i>		
<b>Filettatura</b> <i>Thread types</i>	<b>BSPP cilindrica.</b> <i>BSPP parallel.</i> <b>BSPT conica teflonata.</b> <i>BSPT taper with teflon.</i> <b>Metrica con O-Ring</b> <i>Metric with O-Ring</i>			
<b>Diametri e filetti</b> <i>Threads and diameters</i>	<b>Diametri da 4 mm a 12 mm</b> <i>Diameters from 4 mm to 12 mm</i> <b>Filettature da M5 a 1/2"</b> <i>Threads from M5 to 1/2"</i>			

## CARATTERISTICHE PRINCIPALI

- 1. Tenuta al vuoto - 7,5 PSI (-0,5 Bar)**  
*Vacuum - 7,5 PSI (-0,5 Bar)*
- 2. Montaggio istantaneo**  
*Instant connection*
- 3. Passaggio pieno, nessuna riduzione della portata**  
*Full passage, no reduction flow*
- 4. Ingombri ottimizzati**  
*Optimized dimensions*
- 5. Regolazione precisa e fine**  
*Accurate regulation and precise motion control*

### DP78KP

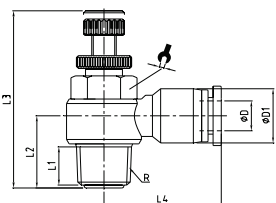


#### DOSATORE PER VALVOLA UNIDIREZIONALE CONICO BSPT - METRICO

#### UNIDIRECTIONAL REGULATOR FOR VALVE TAPER BSPT - METRIC

Codice/Code	ØD	R	L1	L2	L3 (max)	L4	ØD1			
DP78PM504	4	M5	3,5	12	32	20,5	11,5	8		100
DP78KP1804	4	R1/8	6,4	14	42	23,5	11,5	12		100
DP78KP1404	4	R1/4	10	18	48	25,5	11,5	14		50
DP78PM506	6	M5	3,5	12	32	22	13,5	8		100
DP78KP1806	6	R1/8	6,4	14	42	23,5	13,5	12		100
DP78KP1406	6	R1/4	10	18	48	25,4	13,5	14		100
DP78KP3806	6	R3/8	11,4	20,5	53	29,5	13,5	19		30
DP78KP1808	8	R1/8	6,4	14,5	42	26,5	15	12		50
DP78KP1408	8	R1/4	10	19	48	28,9	15	14		50
DP78KP3808	8	R3/8	11,4	20,5	53	29,8	15	19		30
DP78KP1208	8	R1/2	14	25,5	61	32,5	15	24		20
DP78KP1410	10	R1/4	10	20	48	32,6	19	14		30
DP78KP3810	10	R3/8	11,4	22,5	53	33	19	19		30
DP78KP1210	10	R1/2	14	25,5	61	36	19	24		15
DP78KP1412	12	R1/4	10	20	48	33,5	21,5	14		20
DP78KP3812	12	R3/8	11,4	24	53	35,5	21,5	19		20
DP78KP1212	12	R1/2	14	30	61	36,5	21,5	24		15

### DP79KP

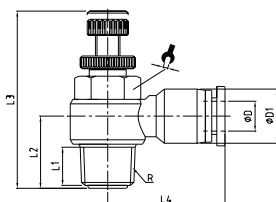


#### DOSATORE PER CILINDRO UNIDIREZIONALE CONICO BSPT

#### UNIDIRECTIONAL REGULATOR FOR CYLINDER TAPER BSPT

Codice/Code	ØD	R	L1	L2	L3 (max)	L4	ØD1			
DP79KP1804	4	R1/8	6,4	14	42	23,5	11,5	12		100
DP79KP1404	4	R1/4	10	18	48	25,5	11,5	14		50
DP79KP1806	6	R1/8	6,4	14	42	23,5	13,5	12		100
DP79KP1406	6	R1/4	10	18	48	25,4	13,5	14		100
DP79KP3806	6	R3/8	11,4	20,5	53	29,5	13,5	19		30
<b>NEW</b> DP79KP1206	6	R1/2	14	25,5	61	32,5	13,5	24		20
DP79KP1808	8	R1/8	6,4	14,5	42	26,5	15	12		50
DP79KP1408	8	R1/4	10	19	48	28,9	15	14		50
DP79KP3808	8	R3/8	11,4	20,5	53	29,8	15	19		30
DP79KP1208	8	R1/2	14	25,5	61	32,5	15	24		20
<b>NEW</b> DP79KP1810	10	R1/8	6,4	17,5	42	30,3	19	12		50
DP79KP1410	10	R1/4	10	20	48	32,6	19	14		30
DP79KP3810	10	R3/8	11,4	22,5	53	33	19	19		30
DP79KP1210	10	R1/2	14	25,5	61	36	19	24		15
DP79KP1412	12	R1/4	10	20	48	33,5	21,5	14		20
DP79KP3812	12	R3/8	11,4	24	53	35,5	21,5	19		20
DP79KP1212	12	R1/2	14	30	61	36,5	21,5	24		15

**DP79P**



**DOSATORE PER CILINDRO UNIDIREZIONALE CILINDRICO BSPP-METRICO**

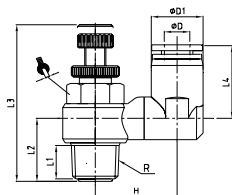
**UNIDIRECTIONAL REGULATOR FOR CYLINDER PARALLEL BSPP-METRIC**

Codice/Code	ØD	R	L1	L2	L3 (max)	L4	ØD1			
DP79PM504	4	M5	3,5	12	32	20,5	11,5	8		100
DP79P1804	4	G1/8	5,5	14	42	23,5	11,5	12		100
DP79P1404	4	G1/4	7,5	18	48	25,5	11,5	14		50
DP79PM506	6	M5	3,5	12	32	22	13,5	8		100
DP79P1806	6	G1/8	5,5	14	42	23,5	13,5	12		100
DP79P1406	6	G1/4	7,5	18	48	25,4	13,5	14		100
DP79P3806	6	G3/8	7,5	20,5	53	29,5	13,5	19		30
<b>NEW</b> DP79P1206	6	G1/2	10	25,5	61	32,5	13,5	24		20
DP79P1808	8	G1/8	5,5	14,5	42	26,5	15	12		50
DP79P1408	8	G1/4	7,5	19	48	28,9	15	14		50
DP79P3808	8	G3/8	7,5	20,5	53	29,8	15	19		30
DP79P1208	8	G1/2	10	25,5	61	32,5	15	24		20
<b>NEW</b> DP79P1810	10	G1/8	5,5	17,5	42	30,3	19	12		50
DP79P1410	10	G1/4	7,5	20	48	32,6	19	14		30
DP79P3810	10	G3/8	7,5	22,5	53	33	19	19		30
DP79P1210	10	G1/2	10	25,5	61	36	19	24		15
DP79P1412	12	G1/4	7,5	20	48	33,5	21,5	14		20
DP79P3812	12	G3/8	7,5	24	53	35,5	21,5	19		20
DP79P1212	12	G1/2	10	30	61	36,5	21,5	24		15

**DP82KP**



**NEW**



**DOSATORE PER VALVOLA UNIDIREZIONALE CONICO BSPT - METRICO**

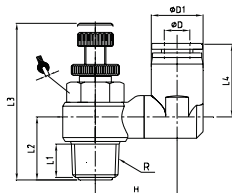
**UNIDIRECTIONAL REGULATOR FOR VALVE TAPER BSPT - METRIC**

Codice/Code	ØD	R	L1	L2	L3 (max)	L4	H	ØD1		
DP82KP1806	6	R1/8	6,4	14	42	26,5	18	15	12	50
DP82KP1406	6	R1/4	10	17,5	48	27	20,5	15	14	50
DP82KP1808	8	R1/8	6,4	14	42	26,5	18	15	12	30
DP82KP1408	8	R1/4	10	17,5	48	27	20,5	15	14	30
DP82KP1410	10	R1/4	10	17,5	48	30	22	21,5	14	15
DP82KP3810	10	R3/8	11,4	21,5	53	31	23	21,5	19	15
DP82KP1412	12	R1/4	10	17,5	48	30	22	21,5	14	15
DP82KP3812	12	R3/8	11,4	21,5	53	31	23	21,5	19	15

### DP83KP



NEW



#### DOSATORE PER CILINDRO UNIDIREZIONALE CONICO BSPT

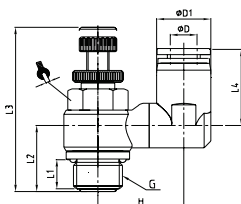
#### UNIDIRECTIONAL REGULATOR FOR CYLINDER TAPER BSPT

Codice/Code	ØD	R	L1	L2	L3 (max)	L4	H	ØD1		
DP83KP1806	6	R1/8	6,4	14	42	26,5	18	15	12	50
DP83KP1406	6	R1/4	10	17,5	48	27	20,5	15	14	50
DP83KP1808	8	R1/8	6,4	14	42	26,5	18	15	12	30
DP83KP1408	8	R1/4	10	17,5	48	27	20,5	15	14	30
DP83KP1410	10	R1/4	10	17,5	48	30	22	21,5	14	15
DP83KP3810	10	R3/8	11,4	21,5	53	31	23	21,5	19	15
DP83KP1412	12	R1/4	10	17,5	48	30	22	21,5	14	15
DP83KP3812	12	R3/8	11,4	21,5	53	31	23	21,5	19	15

### DP83P



NEW

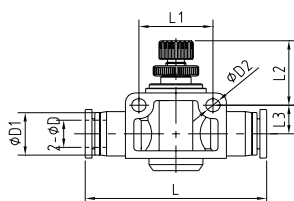


#### DOSATORE PER CILINDRO UNIDIREZIONALE CILINDRICO BSPP

#### UNIDIRECTIONAL REGULATOR FOR CYLINDER PARALLEL BSPP

Codice/Code	ØD	R	L1	L2	L3 (max)	L4	H	ØD1		
DP83P1806	6	G1/8	5,5	14	42	26,5	18	15	12	50
DP83P1406	6	G1/4	7,5	17,5	48	27	20,5	15	14	50
DP83P1808	8	G1/8	5,5	14	42	26,5	18	15	12	30
DP83P1408	8	G1/4	7,5	17,5	48	27	20,5	15	14	30
DP83P1410	10	G1/4	7,5	17,5	48	30	22	21,5	14	15
DP83P3810	10	G3/8	7,5	21,5	53	31	23	21,5	19	15
DP83P1412	12	G1/4	7,5	17,5	48	30	22	21,5	14	15
DP83P3812	12	G3/8	7,5	21,5	53	31	23	21,5	19	15

### DP81



#### DOSATORE DI FLUSSO IN LINEA

#### FLAT FLOW REGULATOR

Codice/Code	ØD	R	L1	L2	L3 (max)	L4	H	ØD1		
DP810400	4	10,5	40,5	14,5	16	6,5	6,5	3,2	14	100
DP810600	6	12,5	48,7	15,5	25,5	8,5	11	4,3	20	50
DP810800	8	14	54,4	16,5	25	9,5	12	4,3	22	30
DP811000	10	18	64,3	19,5	29,5	10,5	12,5	4,3	26	15
DP811200	12	20,6	74,6	21	27,5	13	16	4,3	32	10