

## DATI TECNICI ACCESSORI STANDARD IN OTTONE

### BRASS STANDARD ACCESSORIES TECHNICAL DATA

**Applicazioni**  
*Applications*

**Pneumatica (idraulica a bassa pressione)**  
*Pneumatic (hydraulic system with low pression)*

**Materiali**  
*Materials*

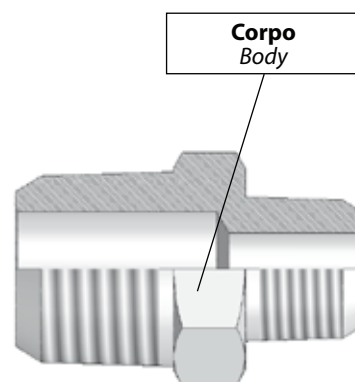
**Corpo Ottone nichelato CW614 N / CW617 N**  
*Body Nickel plated brass CW614 N / CW617 N*

**Filettatura**  
*Thread types*

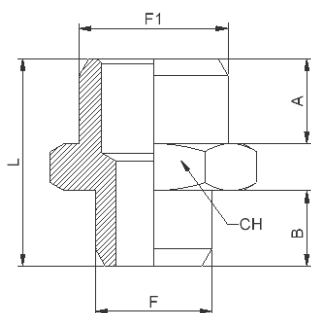
**BSP cilindrica UNI-ISO228.**  
*BSPP cilindric UNI-ISO228.*  
**BSP conica UNI-ISO 7.**  
*BSPT conic UNI-ISO 7.*  
**Metrica ISO/R 262.**  
*Metric ISO/R 262.*

**Filetti**  
*Threads*

**Filettature da M5 a 1"**  
*Threads from M5 to 1"*



AS51

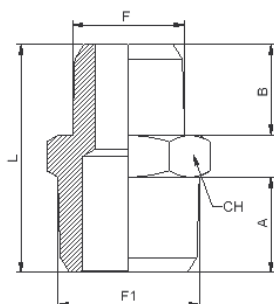


NIPPLO CILINDRICO BSPP-METRICO

NIPPLE PARALLEL BSPP-METRIC

Codice/Code	F	F1	A	B	L	CH		
AS51M5M5	M5	M5	4	4	11.5	8		100
AS51M518	M5	G1/8	6,5	5	15.5	14		100
AS511818	G1/8	G1/8	6	6	16.5	14		100
AS511814	G1/8	G1/4	8	6	19	17		100
AS511838	G1/8	G3/8	9	6	20	19		100
AS511414	G1/4	G1/4	8	8	21	17		100
AS511438	G1/4	G3/8	9	8	22	19		100
AS511412	G1/4	G1/2	10	8	23.5	24		100
AS513838	G3/8	G3/8	9	9	23	19		100
AS513812	G3/8	G1/2	10	9	24.5	24		50
AS513834	G3/8	G3/4	11	10	26,5	30		10
AS511212	G1/2	G1/2	10	10	25.5	24		50
AS511234	G1/2	G3/4	11	11	27.5	30		20
AS511201	G1/2	G1	13	11	30	36		10
AS513434	G3/4	G3/4	11	11	27,5	30		20
AS513401	G3/4	G1	13	11	30	36		10
AS510101	G1	G1	13	13	32	36		10

AS52K



NIPPLO CONICO BSPT

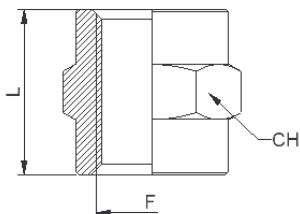
NIPPLE TAPER BSPT

Codice/Code	F	F1	A	B	L	CH		
AS52K1818	R1/8	R1/8	8	8	20	12		100
AS52K1814	R1/8	R1/4	11	8	24	14		100
AS52K1838	R1/8	R3/8	11.5	8	24.5	17		100
AS52K1414	R1/4	R1/4	11	11	27	14		100
AS52K1438	R1/4	R3/8	11.5	11	27.5	17		100
AS52K1412	R1/4	R1/2	14	11	30.5	22		50
AS52K3838	R3/8	R3/8	11.5	11.5	28	17		100
AS52K3812	R3/8	R1/2	14	11.5	31	22		50
AS52K1212	R1/2	R1/2	14	14	33.5	22		50
AS52K1234	R1/2	R3/4	16.5	14	37.5	27		20
AS52K3434	R3/4	R3/4	16.5	16.5	40	27		20
AS52K3401	R3/4	R1	15.5	13	35,5	34		10
AS52K0101	R1	R1	19	19	45.5	34		10

### AS53

#### MANICOTTO

#### SLEEVE

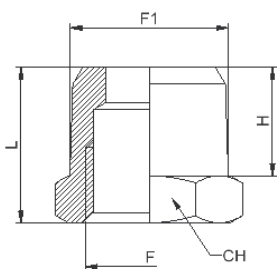


Codice/Code	F	L	CH					
AS53M5M5	M5	11	8					100
AS531818	G1/8	15	14					100
AS531414	G1/4	22	17					100
AS533838	G3/8	24	22					50
AS531212	G1/2	30	26					20
AS533434	G3/4	32	32					20
AS530101	G1	31	38					10

### AS54K

#### RIDUZIONE MASCHIO-FEMMINA CONICO BSPT

#### REDUCER MALE-FEMALE TAPER BSPT

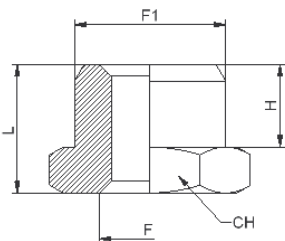


Codice/Code	F1	F	H	L	CH			
AS54K1418	R1/4	G1/8	11	16	14			100
AS54K3818	R3/8	G1/8	11.5	16.5	17			100
AS54K3814	R3/8	G1/4	11.5	16.5	17			100
AS54K1218	R1/2	G1/8	14	19.5	22			50
AS54K1214	R1/2	G1/4	14	19.5	22			50
AS54K1238	R1/2	G3/8	14	19.5	22			50
AS54K3438	R3/4	G3/8	14	20	27			20
AS54K3412	R3/4	G1/2	16.5	23.5	27			20
AS54K0138	R1	G3/8	15.5	21,5	34			10
AS54K0112	R1	G1/2	15.5	21,5	34			10
AS54K0134	R1	G3/4	15.5	21,5	34			10

### AS54

#### RIDUZIONE MASCHIO-FEMMINA CILINDRICO BSPP

#### REDUCER MALE-FEMALE PARALLEL BSPP

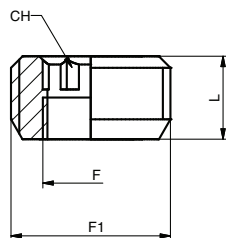


Codice/Code	F1	F	H	L	CH			
AS5418M5	G1/8	M5	6	10.5	14			100
AS541418	G1/4	G1/8	8	13	17			100
AS543818	G3/8	G1/8	9	14	19			100
AS543814	G3/8	G1/4	9	14	19			100
AS541218	G1/2	G1/8	10	15	24			50
AS541214	G1/2	G1/4	10	15.5	24			50
AS541238	G1/2	G3/8	10	15.5	24			50
AS543414	G3/4	G1/4	11	16.5	30			10
AS543438	G3/4	G3/8	11	16.5	30			20
AS543412	G3/4	G1/2	12	18	27			20
AS540138	G1	G3/8	13.5	19.5	36			10
AS540112	G1	G1/2	13	19	36			10
AS540134	G1	G3/4	13	19	36			10

AS54S

RIDUZIONE A SCOMPARS A BRUGOLA CILINDRICA BSPP

HEXAGONAL HIDDEN REDUCER PARALLEL BSPP

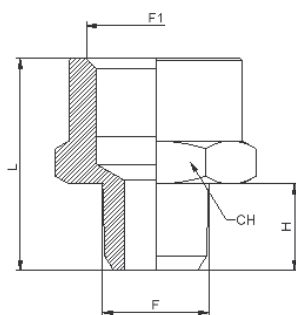


Codice/Code	F	F1	L	CH			
AS54S18M5	M5	G1/8	8	3			50
AS54S1418	G1/8	G1/4	9	6			50
AS54S3818	G1/8	G3/8	9	6			50
AS54S3814	G1/4	G3/8	9	8			50
AS54S1214	G1/4	G1/2	10,5	10			50
AS54S1238	G3/8	G1/2	10,5	10			50
AS54S3412	G1/2	G3/4	13	12			20
AS54S0134	G3/4	G1	15	17			20

AS55K

MAGGIORAZIONE MASCHIO-FEMMINA CONICO BSPT

EXTENSION MALE-FEMALE TAPER BSPT

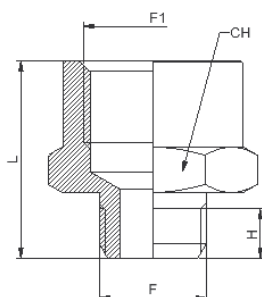


Codice/Code	F	F1	H	L	CH		
AS55K1818	R1/8	G1/8	8	20	14		100
AS55K1814	R1/8	G1/4	8	22.5	17		100
AS55K1838	R1/8	G3/8	8	25	22		50
AS55K1414	R1/4	G1/4	11	25	17		100
AS55K1438	R1/4	G3/8	11	27	22		50
AS55K1412	R1/4	G1/2	11	31.5	26		50
AS55K3838	R3/8	G3/8	11.5	27.5	22		50
AS55K3812	R3/8	G1/2	11.5	32	26		50
AS55K3834	R3/8	R3/4	11.5	32,5	32		10
AS55K1212	R1/2	G1/2	14	34.5	26		20
AS55K1234	R1/2	G3/4	14	35	32		10
AS55K1201	R1/2	R1	13	31	38		10
AS55K3434	R3/4	R3/4	16.5	37	32		10
AS55K3401	R3/4	R1	13	31	38		10
AS55K0101	R1	R1	15.5	33.5	38		10

AS55

MAGGIORAZIONE MASCHIO-FEMMINA CILINDRICO BSPP

EXTENSION MALE-FEMALE PARALLEL BSPP

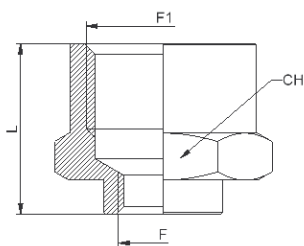


Codice/Code	F	F1	H	L	CH				
AS55M518	M5	G1/8	4	15.5	14				100
AS551818	G1/8	G1/8	6	16.5	14				100
AS551814	G1/8	G1/4	6	20.5	17				100
AS551838	G1/8	G3/8	6	23	22				50
AS551414	G1/4	G1/4	8	22	17				100
AS551438	G1/4	G3/8	8	24	22				50
AS551412	G1/4	G1/2	8	28.5	26				50
AS553838	G3/8	G3/8	9	25	22				50
AS553812	G3/8	G1/2	9	29.5	26				50
AS553834	G3/8	G3/4	9	30	32				20
AS551212	G1/2	G1/2	10	30	26				20
AS551234	G1/2	G3/4	10	31	32				10
AS551201	G1/2	G1	8	25	38				10
AS553434	G3/4	G3/4	12	33	32				10
AS553401	G3/4	G1	8	25	38				10
AS550101	G1	G1	13	32	38				10

AS56

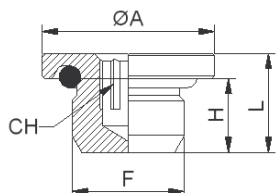
MANICOTTO RIDOTTO CILINDRICO BSPP

REDUCING SLEEVE PARALLEL BSPP



Codice/Code	F	F1	L	CH					
AS56M518	M5	G1/8	12.5	14					100
AS561814	G1/8	G1/4	19.5	17					100
AS561838	G1/8	G3/8	20	22					50
AS561812	G1/8	G1/2	24	24					50
AS561438	G1/4	G3/8	23	22					50
AS561412	G1/4	G1/2	24	27					50
AS563812	G3/8	G1/2	27.5	26					50
AS563834	G3/8	G3/4	25	32					10
AS563412	G1/2	G3/4	30	32					10
AS560112	G1/2	G1	25	38					10
AS560134	G3/4	G1	25	38					10

**AS57 OR**

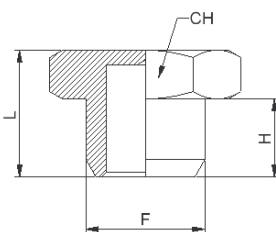


**TAPPO CON O-RING ESAG. INTERNO CILIND. BSPP-METRICO**

**MALE PLUG WITH O-RING INTERNAL HEXAGON PARALLEL BSPP-METRIC**

Codice/Code	F	H	L	ØA	CH				
AS57ORM5	M5	4	5.5	8	2.5				100
AS57OR18	G1/8	6	8	14	4				100
AS57OR14	G1/4	8	10	17	6				100
AS57OR38	G3/8	9	12	20	8				100
AS57OR12	G1/2	11	14	24	10				100

**AS57**

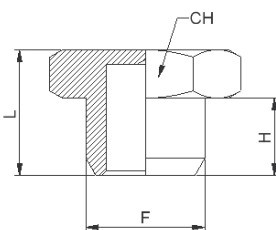


**TAPPO ESAGONALE (SENZA O-RING) CILINDRICO BSPP**

**HEXAGON MALE PLUG (NO O-RING) PARALLEL BSPP**

Codice/Code	F	H	L	CH					
AS5700M5	M5	4	7	8					100
AS570018	G1/8	6	10.5	14					100
AS570014	G1/4	8	13	17					100
AS570038	G3/8	9	14	19					100
AS570012	G1/2	10	15.5	24					100
AS570034	G3/4	11	16.5	30					10
AS570001	G1	12.5	18.5	36					10

**AS57K**

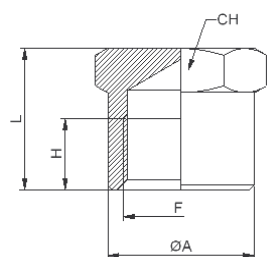


**TAPPO ESAGONALE CONICO BSPT**

**HEXAGON MALE PLUG TAPER BSPT**

Codice/Code	F	H	L	CH					
AS57K0018	R1/8	7,5	11.5	10					100
AS57K0014	R1/4	11	15.5	14					100
AS57K0038	R3/8	11	16	17					100
AS57K0012	R1/2	12	17.5	22					100
AS57K0034	R3/4	13.5	19.5	27					10
AS57K0001	R1	15.5	22	34					10

**AS58**

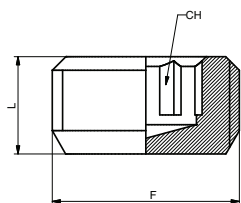


**TAPPO FEMMINA CILINDRICO BSPP**

**FEMALE PLUG PARALLEL BSPP**

Codice/Code	F	H	L	CH					
AS5800M5	M5	5.5	7	8					100
AS580018	G1/8	9	11	14					100
AS580014	G1/4	8	16	17					100
AS580038	G3/8	11	13.5	21					50
AS580012	G1/2	11	13.5	24					50
AS580034	G3/4	12.5	15	30					10
AS580001	G1	12.5	15	38					10

**AS79**

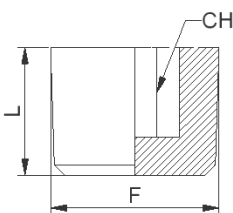


**TAPPO A SCOMPARSA CILINDRICO BSPP**

**HIDDEN PLUG-PARALLEL BSPP**

Codice/Code	F	L	CH						
AS790018	G1/8	7	5						50
AS790014	G1/4	10	6						50
AS790038	G3/8	10	8						50
AS790012	G1/2	11	10						50

**AS79K**

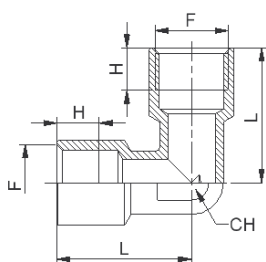


**TAPPO A SCOMPARSA CONICO BSPT**

**HIDDEN PLUG-TAPER BSPT**

Codice/Code	F	L	CH						
AS79K0018	R1/8	8	5						50
AS79K0014	R1/4	10	6						50
AS79K0038	R3/8	10.5	8						50
AS79K0012	R1/2	13	10						50

**AS59**



**GOMITO FEMMINA CILINDRICO BSPP**

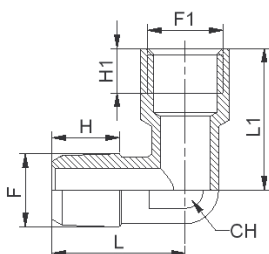
**ELBOW FEMALE PARALLEL BSPP**

Codice/Code	F	H	L	CH					
AS5900M5	M5	4	11	8					50
AS590018	G1/8	7	20	10					100
AS590014	G1/4	8	25.5	13					50
AS590038	G3/8	10	29	17					20
AS590012	G1/2	11	35	20					20
AS590034	G3/4	16.5	36.5	25					10
AS590001	G1	19	45	30					5

### AS60K

#### GOMITO MASCHIO CONICO BSPT FEMMINA CILINDRICO BSPP

#### ELBOW MALE TAPER BSPT FEMALE PARALLEL BSPP

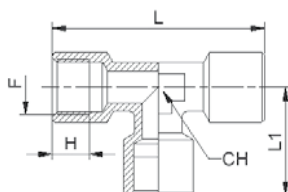


Codice/Code	F	F1	H	H1	L	L1	CH	
AS60K00M5	M5	M5	4	4	11.5	13.5	8	100
AS60K0018	R1/8	G1/8	8	7	19	20	10	100
AS60K0014	R1/4	G1/4	12.5	8	24	25.5	13	50
AS60K0038	R3/8	G3/8	13.6	10	26.5	29	17	20
AS60K0012	R1/2	G1/2	15.5	11	31.5	35	20	20
AS60K0034	R3/4	G3/4	16	16.5	33	36.5	25	10
AS60K0001	R1	G1	17	19	39	45	30	5

### AS61

#### T FEMMINA CILINDRICO BSPP

#### T FEMALE PARALLEL BSPP

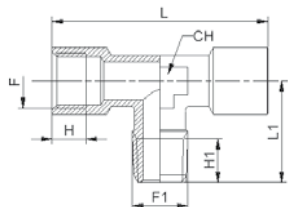


Codice/Code	F	H	L	L1	CH			
AS6100M5	M5	5	22	11	9			50
AS610018	G1/8	7	40	20	10			50
AS610014	G1/4	8	51	25.5	13			20
AS610038	G3/8	10	58	29	17			20
AS610012	G1/2	11	70	35	20			10
AS610034	G3/4	16.5	73	36.5	25			10
AS610001	G1	19	90	45	30			4

### AS62K

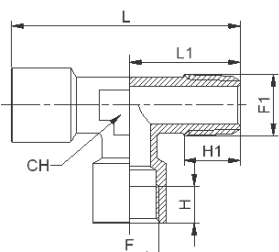
#### T CENTRALE CONICO BSPT

#### CENTRE T MALE TAPER BSPT



Codice/Code	F	F1	H	H1	L	L1	CH	
AS6200M5	M5	M5	5	4	22	11.5	9	50
AS62K0018	G1/8	R1/8	7	8	40	19	10	50
AS62K0014	G1/4	R1/4	8	11	51	24	13	20
AS62K0038	G3/8	R3/8	10	13.6	58	26.5	17	20
AS62K0012	G1/2	R1/2	11	15.5	70	31.5	20	10
AS62K0034	G3/4	R3/4	16.5	16	73	33	25	10
AS62K0001	G1	R1	19	17.5	90	39	30	4

**AS63K**

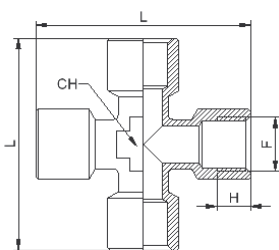


**T LATERALE CONICO BSPT**

**LATERAL T MALE TAPER BSPT**

Codice/Code	F	F1	H	H1	L	L1	CH	
AS6300M5	M5	M5	5	4	22	11.5	9	50
AS63K0018	G1/8	R1/8	7	8	39	19	10	50
AS63K0014	G1/4	R1/4	8	11	49.5	24	13	20
AS63K0038	G3/8	R3/8	10	13.6	55.5	26.5	17	20
AS63K0012	G1/2	R1/2	11	15.5	66.5	31.5	20	10
AS63K0034	G3/4	R3/4	16.5	16	69.5	33	25	10
AS63K0001	G1	R1	19	17.5	84	39	30	4

**AS64**

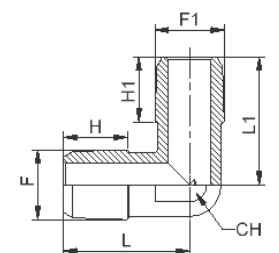


**CROCE FEMMINA CILINDRICO BSPP**

**FEMALE CROSS PARALLEL BSPP**

Codice/Code	F	H	L	CH				
AS640018	G1/8	7	46	13				20
AS640014	G1/4	8	51	13				20
AS640038	G3/8	10	58	17				10
AS640012	G1/2	14	67	21				10

**AS65K**

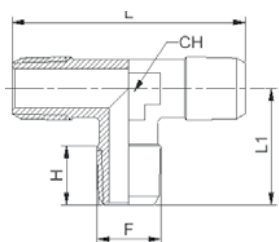


**GOMITO MASCHIO CONICO BSPT**

**ELBOW MALE TAPER BSPT**

Codice/Code	F	F1	H	H1	L	L1	CH	
AS6500M5	M5	M5	4	4	11.5	11.5	8	50
AS65K0018	R1/8	R1/8	8	8	19	19	10	100
AS65K0014	R1/4	R1/4	12.5	12.5	24	24	13	50
AS65K0038	R3/8	R3/8	13.6	13.6	26.5	26.5	17	20
AS65K0012	R1/2	R1/2	15.5	15.5	31.5	31.5	20	20
AS65K0034	R3/4	R3/4	16	16	33	33	25	10
AS65K0001	R1	R1	17	17	39	39	30	5

**AS66K**



**T MASCHIO CONICO BSPT**

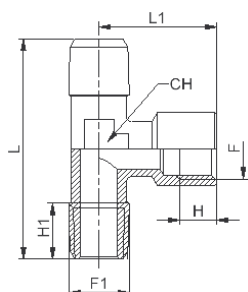
**T MALE TAPER BSPT**

Codice/Code	F	H	L	L1	CH			
AS6600M5	M5	5	27.5	13.5	8			50
AS66K0018	R1/8	8	38	19	10			50
AS66K0014	R1/4	12.5	48	24	13			20
AS66K0038	R3/8	13.6	53	26.5	17			20
AS66K0012	R1/2	15.5	63	31.5	20			10
AS66K0034	R3/4	16.2	66.4	33	25			10
AS66K0001	R1	17.5	78	39	30			4

AS67K

T FEMMINA CENTRALE CONICO BSPT

CENTRE FEMALE T TAPER BSPT

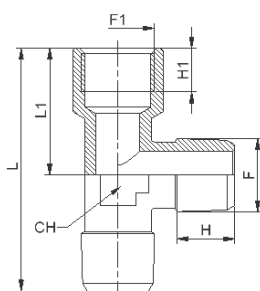


Codice/Code	F	F1	H	H1	L	L1	CH	
AS6700M5	M5	M5	5.5	5	27.5	13	8	50
AS67K0018	G1/8	R1/8	7	8	38	20	10	50
AS67K0014	G1/4	R1/4	8	12.5	48	25.5	13	20
AS67K0038	G3/8	R3/8	10	13.6	53	29	17	20
AS67K0012	G1/2	R1/2	11	15.5	63	35	20	10
AS67K0034	G3/4	R3/4	16.5	16	69.5	36.5	25	10
AS67K0001	G1	R1	19	17.5	84	45	30	4

AS68K

T FEMMINA LATERALE CONICO BSPT

LATERAL FEMALE T TAPER BSPT

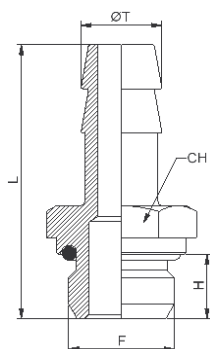


Codice/Code	F	F1	H	H1	L	L1	CH	
AS6800M5	M5	M5	5	5.5	26	12	8	50
AS68K0018	R1/8	G1/8	8	7	39	20	10	50
AS68K0014	R1/4	G1/4	12.5	8	49.5	25.5	13	20
AS68K0038	R3/8	G3/8	13.6	10	55.5	29	17	20
AS68K0012	R1/2	G1/2	15.5	11	66.5	35	20	10
AS68K0034	R3/4	G3/4	16	16.5	69.5	36.5	25	10
AS68K0001	R1	G1	17.5	19	84	45	30	4

AS69 OR

PORTAGOMMA MASCHIO CON O-RING CILINDRICO BSPP

HOSE MALE ADAPTER WITH O-RING PARALLEL BSPP

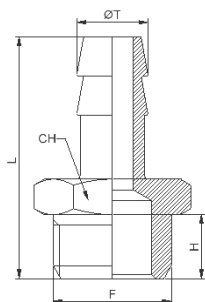


Codice/Code	ØT	F	H	L	CH			
NEW AS69ORM545	4	M5	4	22.5	8			100
NEW AS69OR1806	6	G1/8	6	29.5	12			100
NEW AS69OR1406	6	G1/4	8	32	14			100
AS69OR1807	7	G1/8	6	31.5	13			100
AS69OR1407	7	G1/4	8	34	16			100
AS69OR1808	8	G1/8	6	29.5	12			100
NEW AS69OR1408	8	G1/4	8	32	14			100
AS69OR1809	9	G1/8	6	29.5	12			100
AS69OR1409	9	G1/4	8	32	14			100
AS69OR3809	9	G3/8	9	35	17			100
AS69OR1810	10	G1/8	6	31.5	13			50
AS69OR1410	10	G1/4	8	34	16			50
AS69OR1412	12	G1/4	8	34	16			50
AS69OR3812	12	G3/8	9	34	19			50
AS69OR1212	12	G1/2	10	35.5	22			50
AS69OR3817	17	G3/8	9	38	19			50
AS69OR1217	17	G1/2	10	39.5	22			50

AS69

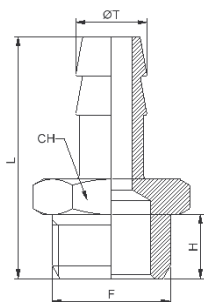
PORTAGOMMA MASCHIO CILINDRICO BSPP

HOSE MALE ADAPTER PARALLEL BSPP



Codice/Code	ØT	F	H	L	CH			
AS69M504	4	M5	4	22.5	8			100
AS691806	6	G1/8	6	30.5	14			100
AS691406	6	G1/4	8	33	17			100
AS691807	7	G1/8	6	30.5	14			100
AS691407	7	G1/4	8	32	14			100
AS691808	8	G1/8	6	29.5	12			100
AS691408	8	G1/4	8	32	14			100
AS693808	8	G3/8	9	33	19			100
AS691809	9	G1/8	6	30.5	14			100
AS691409	9	G1/4	8	32	14			100
AS693809	9	G3/8	9	34	19			100
AS691810	10	G1/8	6	30.5	14			100
AS691410	10	G1/4	8	33	17			100
AS693810	10	G3/8	9	34	19			100
AS691412	12	G1/4	8	33	17			50
AS693812	12	G3/8	9	34	19			50
AS691212	12	G1/2	10	35.5	22			50
AS693814	14	G3/8	9	34	19			50
AS691214	14	G1/2	10	35.5	24			50
AS693817	17	G3/8	9	38	19			50
AS691217	17	G1/2	10	35.5	24			50
AS693418	18	G3/4	11	41.5	30			20
AS691220	20	G1/2	10	39.5	22			20
AS693420	20	G3/4	11	41.5	30			20

AS69K

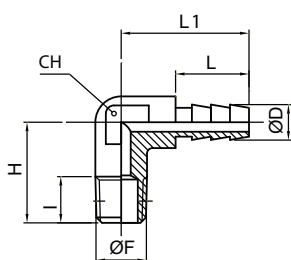


PORTAGOMMA MASCHIO CONICO BSPT

HOSE MALE ADAPTER TAPER BSPT

Codice/Code	ØT	F	H	L	CH			
AS69K1806	6	R1/8	8	31,5	12			50
AS69K1406	6	R1/4	11	35	14			50
AS69K1807	7	R1/8	8	31,5	12			50
AS69K1407	7	R1/4	11	32	14			50
AS69K1808	8	R1/8	8	31,5	12			50
AS69K1408	8	R1/4	11	35	14			50
AS69K1809	9	R1/8	8	31,5	12			50
AS69K1409	9	R1/4	11	35	14			50
AS69K3809	9	R3/8	11,5	35,5	17			50
AS69K1209	9	R1/2	14	38,5	22			50
AS69K1810	10	R1/8	8	32,5	12			50
AS69K1410	10	R1/4	11	36	14			50
AS69K3810	10	R3/8	11,5	36,5	17			50
AS69K1210	10	R1/2	14	39,5	22			50
AS69K1412	12	R1/4	11	36	14			50
AS69K3812	12	R3/8	11,5	36,5	17			50
AS69K1212	12	R1/2	14	39,5	22			50
AS69K3814	14	R3/8	11,5	38,5	17			50
AS69K1214	14	R1/2	14	41,5	22			50
AS69K3816	16	R3/8	11,5	38,5	17			50
AS69K1216	16	R1/2	14	41,5	22			50
AS69K3416	16	R3/4	16,5	45	27			50
AS69K3817	17	R3/8	11,5	40,5	18			50
AS69K1217	17	R1/2	14	43,5	22			50
AS69K3818	18	R3/8	11,5	40,5	19			50
AS69K1218	18	R1/2	14	43,5	22			50
AS69K3418	18	R3/4	16,5	47	27			50
AS69K3820	20	R3/8	11,5	41	22			20
AS69K1220	20	R1/2	14	43,5	22			20
AS69K3420	20	R3/4	16,5	46,5	27			20
AS69K3425	25	R3/4	16,5	53	27			10
AS69K0125	25	R 1"	19	56	34			10

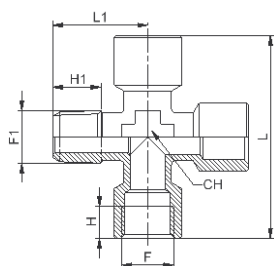
AS69KL



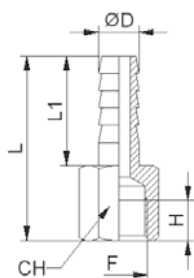
GOMITO PORTAGOMMA MASCHIO CONICO BSPT

ELBOW HOSE MALE ADAPTOR TAPER BSPT

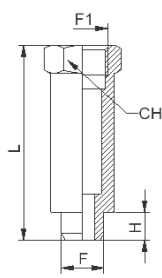
Codice/Code	F	F1	H	H1	L	L1	CH	
AS69KL1806A	6	R1/8	8	18,5	22,5	14	8	50
AS69KL1806B	6	R1/8	11	23	22,5	14	8	50
AS69KL1406	6	R1/4	11	23	23	14	9	50
AS69KL1807A	7	R1/8	8	18,5	22,5	14	8	50
AS69KL1807B	7	R1/8	11	23	22,5	14	8	50
AS69KL1407	7	R1/4	12	23	23	14	9	50

**AS70K**
**CROCE 3 FEMMINE 1 MASCHIO CONICO BSPT**
**CROSS 3 FEMALE 1 MALE TAPER BSPT**


Codice/Code	F	F1	H	H1	L	L1	CH	
AS70K0018	G1/8	R1/8	7	8	46	23	13	20
AS70K0014	G1/4	R1/4	8	12.5	51	24	13	20
AS70K0038	G3/8	R3/8	10	13.6	58	26.5	17	10
AS70K0012	G1/2	R1/2	14	14	67	31	21	10

**AS72**
**PORTAGOMMA FEMMINA CILINDRICO BSPP**
**HOSE FEMALE ADAPTER PARALLEL BSPP**


Codice/Code	ØD	F	H	L	L1	CH		
AS721807	7	G1/8	7	32	19	12		100
AS721407	7	G1/4	8	33	20	17		100
AS721408	8	G1/4	11	33	20	17		100
AS721409	9	G1/4	8	33	20	17		100

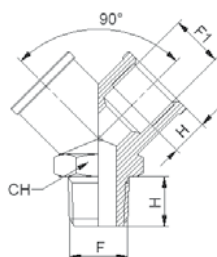
**AS73**
**PROLUNGA CILINDRICO BSPP**
**EXTENSION PARALLEL BSPP**


Codice/Code	F	F1	H	L	CH			
AS731822	G1/8	G1/8	6	22	14			100
AS731832	G1/8	G1/8	6	32	14			100
AS731842	G1/8	G1/8	6	42	14			100
AS731851	G1/8	G1/8	6	51	14			100
AS731428	G1/4	G1/4	8	28	17			100
AS731435	G1/4	G1/4	8	35	17			50
AS731451	G1/4	G1/4	8	51	17			50
AS733841	G3/8	G3/8	9	41	22			50
AS731236	G1/2	G1/2	10	35	26			50
AS733450	G3/4	G3/4	12	50	30			10
AS730150	G1	G1	12	50	38			10

**AS75K**

**Y MASCHIO CONICO BSPT**

**Y MALE TAPER BSPT**

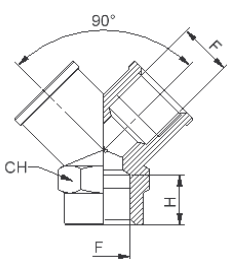


Codice/Code	F	F1	H	CH				
AS75K0018	R1/8	G1/8	8	13				50
AS75K0014	R1/4	G1/4	11	17				20
AS75K0038	R3/8	G3/8	11.5	20				20
AS75K0012	R1/2	G1/2	14	25				10

**AS76**

**Y FEMMINA CILINDRICO BSPP**

**Y FEMALE PARALLEL BSPP**

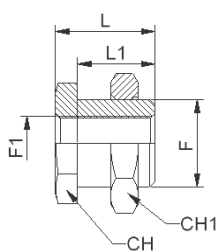


Codice/Code	F	H	CH					
AS760018	G1/8	8	13					50
AS760014	G1/4	11	17					20
AS760038	G3/8	11.5	20					20
AS760012	G1/2	14	25					10

**AS77**

**DIRITTO FEMMINA PASSALAMIERA CILINDRICO BSPP**

**STRAIGHT FEMALE BULKHEAD PARALLEL BSPP**



Codice/Code	F	F1	L	L1	CH	CH 1		
AS7700M5	M5	M10x1	14	10.5	14	14		100
AS770018	G1/8	M16x1.5	18	14	19	22		100
AS770014	G1/4	M20x1.5	25	21	24	27		50
AS770038	G3/8	M26x1.5	26	21	30	32		20
AS770012	G1/2	M28x1.5	33	27	32	36		10

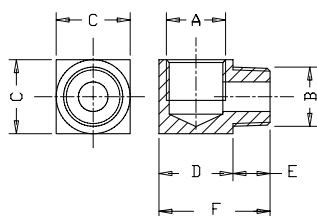
### AS80K

#### L MASCHIO CONICO BSPT FEMMINA CILINDRICO BSPP

#### ELBOW MALE TAPER BSPT FEMALE PARALLEL BSPP



NEW



Codice/Code	A	B	C	D	E	F		
AS80M5M5	M5	M5	9	9	4,6	13,6		50
AS80K1818	R1/8	R1/8	14	14	8	22		50
AS80K1814	R1/8	R1/4	18	18	8	26		50
AS80K1418	R1/4	R1/8	18	18	10	28		50
AS80K1414	R1/4	R1/4	18	18	10	28		50
AS80K1438	R1/4	R3/8	20	21	10	31		50
AS80K3814	R3/8	R1/4	20	21	11	32		50
AS80K3838	R3/8	R3/8	20	21	11	32		50

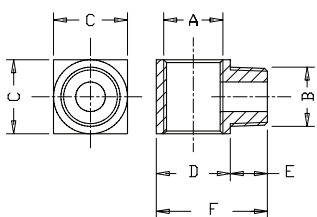
### AS81K

#### T MASCHIO CONICO BSPT FEMMINA CILINDRICO BSPP

#### T MALE TAPER BSPT FEMALE PARALLEL BSPP



NEW



Codice/Code	A	B	C	D	E	F		
AS81M5M5	M5	M5	9	9	4,6	13,6		50
AS81K1818	R 1/8	R 1/8	14	14	9	22		50
AS81K1414	R 1/4	R 1/4	18	18	10	28		50
AS81K3838	R 3/8	R 3/8	20	21	11	32		50

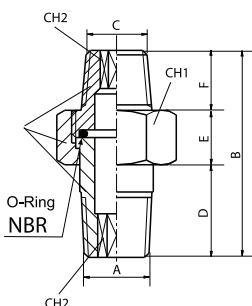
### AS82K

#### RACCORDO A 3 PEZZI CONICO BSPT

#### THREE PIECES UNION TAPER BSPT



NEW



Codice/Code	A	B	C	D	E	F	CH1	CH2	
AS82K1818	R1/8"	33	R1/8"	15	8,5	9,5	15	5	50
AS82K1814	R1/8"	34	R1/4"	15	8,5	10,5	15	5	50
AS82K1414	R1/4"	38	R1/4"	17	10	11	19	6	50
AS82K1438	R1/4"	40	R3/8"	17	10	13	19	6	50
AS82K3838	R3/8"	52	R3/8"	23	16	13	26	10	50
AS82K3812	R3/8"	53	R1/2"	23	16	14	26	10	50
AS82K1212	R1/2"	54	R1/2"	24	16	14	30	12	50

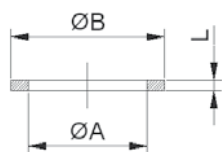
Pressione di esercizio **Max 10 Bar**  
Working pressure **Max 10 Bar**

Temperatura di utilizzo **-10°C ÷ 85°C**  
Temperature range **-10°C ÷ 85°C**

Corpo Ottone nichelato  
Body Brass nickel plated

O-Ring NBR  
O-Ring NBR

AS91



N = NYLON

RONDELLE

WASHERS

Codice/Code	ØA	ØB	L						
AS91N00M5	M5	9	1.5						100
AS91N0018	G1/8	14	1.5						100
AS91N0014	G1/4	18	1.5						100
AS91N0038	G3/8	22	1.5						100
AS91N0012	G1/2	27	1.5						100

AS910018	G1/8	13.8	1.5						100
AS910014	G1/4	18	1.5						100
AS910038	G3/8	21	1.5						100
AS910012	G1/2	26	1.5						100

AS92N

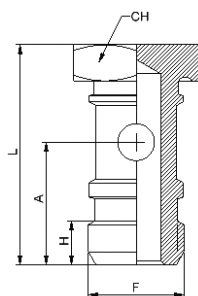


AS92N00M5	M5	8	1.3						100
AS92N0018	G1/8	14	2						100
AS92N0014	G1/4	18	2						100
AS92N0038	G3/8	21	2						100
AS92N0012	G1/2	26	2						100

AS87OR



NEW



ASTA SINGOLA CILINDRICA BSPP CON O-RING

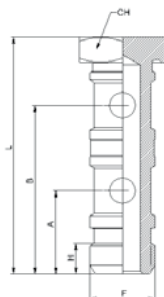
STEAM SINGLE PARALLEL BSPP WITH O-RING

Codice/Code	A	H	A	L	CH				
AS87OR18	G1/8	4,5	13,75	25	14				100
AS87OR14	G1/4	6	16,7	30	17				50
AS87OR38	G3/8	6	18	34	22				20
AS87OR12	G1/2	7,4	21,5	35,5	27				20

AS88OR



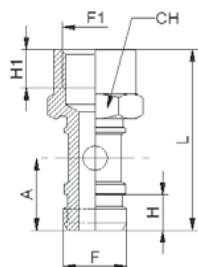
NEW




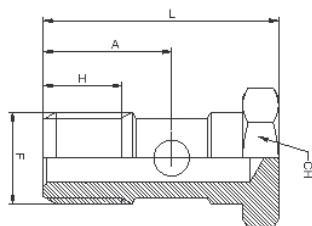
ASTA DOPPIA CILINDRICA BSPP CON O-RING


STEAM DOUBLE PARALLEL BSPP WITH O-RING

Codice/Code	A	H	A	L	CH				
AS88OR18	G 1/8	4,5	13	29	40	14	50		50
AS88OR14	G 1/4	6	16,5	33,5	47	17	50		50
AS88OR38	G 3/8	8,5	18	37,6	52,5	22	20		20
AS88OR12	G 1/2	10,8	21,5	45	63	27	20		20

**AS99**

**ASTA 1 POSIZIONE FEMMINA CILINDRICO BSPP**
**FEMALE STEAM 1 POSITION PARALLEL BSPP**

Codice/Code	F	F1	H	H1	L	A	CH	
AS990018	G1/8	G1/8	6.5	6	32	13.25	14	50
AS990014	G1/4	G1/4	7.5	8	38	15.2	17	50

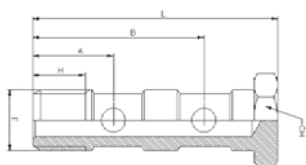
**AS87**

**ASTA 1 POSIZIONE CILINDRICO BSPP-METRICO**
**STEAM 1 POSITION PARALLEL BSPP-METRIC**

Codice/Code	F	H	A	L	CH	
AS8700M5	M5	5.8	9.6	17.5	8	100
AS870018	1/8"	9	15	28	14	100
AS870014	1/4"	11	18	33	17	50

*AS87S0014	1/4"	11	25	29.5	17	20
------------	------	----	----	------	----	----

\* **Articolo da assemblare con RC66 1/4"**

\* *Item used for RC66 1/4"*

**AS88**

**ASTA DOPPIA CILINDRICO BSPP**
**STEAM 2 POSITIONS PARALLEL BSPP**

Codice/Code	F	H	A	B	L	CH	
AS880018	1/8"	9	15	31	44.5	14	50
AS880014	1/4"	11	17	36	51.5	17	50

AS88S0014	1/4"	11		41	45.5	17	20
-----------	------	----	--	----	------	----	----

\* **Articolo da assemblare con RC66 1/4"**

\* *Item used for RC66 1/4"*